

# CONTOIL® VZO 4...50

## VZO 4 and 8

### Technical data 1)



- oil meter with internal threaded connections located on the bottom plate
- with mechanical roller counter, volume display in litres
- meters in US-Gallons 2)
- for mounting in horizontal, vertical and inclined positions
- VZO 4 and 8 with EEC legal verification

Option: Reed pulser 48 V

Type			VZO 4	VZO 4	VZO 8	
			<b>Q<sub>min</sub> 0.5</b>			
<b>Nominal diameter</b>	<b>mm</b>		<b>4</b>	<b>4</b>	<b>8</b>	
	inch		1/8	1/8	1/4	
Connection threads of meter		inch	1/8	1/8	1/4	
Nominal pressure		bar	25			
Temperature	T <sub>max</sub>	° C	60			
Maximum flow rate	Q <sub>max</sub> 3)	l/h	40	80	200	
<b>Nominal flow rate</b>	<b>Q<sub>cont</sub> 3)</b>	<b>l/h</b>	<b>25</b>	<b>50</b>	<b>135</b>	
Minimal flow rate	Q <sub>min</sub> 4)	l/h	0.5	1	4	
Approx. starting flow rate		l/h	0.3	0.4	1.6	
Max. permissible error			±1 % of actual value 4)			
Repeatability			±0.2 %			
Smallest readable amount		l	0.001	0.001	0.01	
Registration capacity		m <sup>3</sup>	100	100	1000	
Registration at Q <sub>cont</sub> until overrunning to zero		h	4 000	2 000	7 400	
Safety filter mesh size		mm	0.125	0.125	0.150	
<b>Dirt filter mesh size</b>		<b>mm</b>	<b>0.080</b>	<b>0.080</b>	<b>0.100</b>	
Volume of the measuring chamber		approx. cm <sup>3</sup>	5	5	12.5	
Weight without couplings		approx. kg	0.65	0.65	0.75	
Reed pulsers	RE 1	l/pulse	–	–	1	
	RE 0.1		–	0.1	–	
	RE 0.00125		–	0.00125	–	
	RE 0.00311		–	–	0.00311	
Pulse frequency for	RE 0.00125 5)	at Q <sub>max</sub>	Hz	–	17.777	–
		at Q <sub>min</sub>	Hz	–	0.222	–
Pulse frequency for	RE 0.00311 5)	at Q <sub>max</sub>	Hz	–	–	17.864
		at Q <sub>min</sub>	Hz	–	–	0.357

1) Manufacturer's specification, valid for the reference conditions as specified under Meter data.

2) 1 US gallon corresponds to 3.785 litres

3) For burners and engines or motors, the meter must be selected on the basis of the permanent flow rate. For higher viscosities, or if the meter is installed on the suction side, the pressure drop and any reduction in the measuring range must also be taken into consideration.

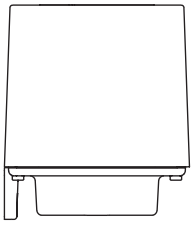
4) Max. permissible error: VZO 4 Q<sub>min</sub> 0.5: 0.5 l/h...2 l/h = +1 % / -2 %. VZO 4: 1 l/h...2 l/h = +1 % / -2 %.

5) Note: pulses of short duration!

### Pressure drop curves

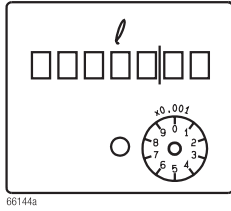
See Meter data

**Dimensions in mm**

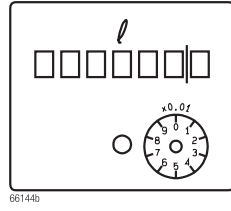


height = 78  
width = 68  
depth = 68

**Dial**  
VZO 4

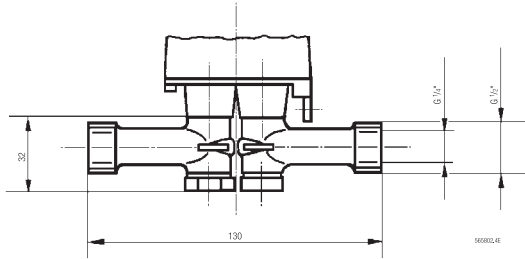


VZO 8

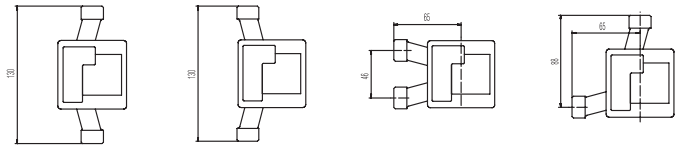


Detailed dimensional drawings in Meter data

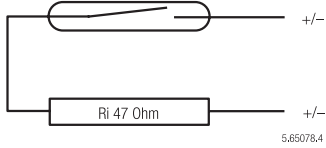
**Mounting kit for VZO 8**



Order No. 81130: some possible mounting positions



**RE Pulsers**



- Switching element:  
Switching voltage:  
Switching current:  
Quiescent current:  
Switching power:  
Duty cycle:  
Temperature:  
Protection class:  
Connections:
- Reed switch with dry contact (inert gas)
  - Max. 48 VAC/DC, Protection class III (SELV)
  - Max. 50 mA
  - Open Contact
  - Max. 2 W
  - 30...70 %
  - Ambient -10...+60 °C
  - IP 50 (IEC 60529) against harmful dust deposits  
- Option: IP 54 additional against splashing water
  - On plug connector with cable, 3.5 - 5 mm Ø

