

SCHEDA TECNICA TECHNICAL DATA

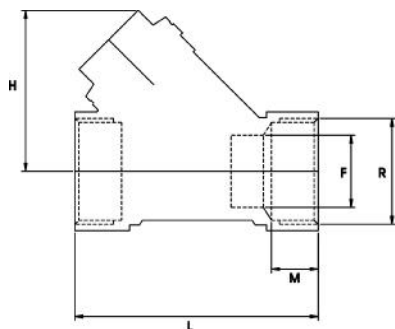


RACCOGLITORE DI IMPURITA' A "Y"
Brass "Y" Strainer

CARATTERISTICHE	FEATURES
<ul style="list-style-type: none"> CORPO, IN OTTONE CW617N FILTRO IN ACCIAIO INOX AISI 304. GUARNIZIONE PTFE FINITURA SABBIAIA FILETTATURE ISO 228/1 TEMP. -20°C +130°C 	<ul style="list-style-type: none"> BRASS "CW617N" BODY. STAINLESS STEEL BASKET STRAINER. GASKET PTFE SAND-BLASTED FINISHING. THREADING TO ISO 228/1. TEMP. -20°C +130°C

DIMENSIONI PRINCIPALI

LEADING DIMENSIONS



R"	1/2	3/4	1	1 1/4	1 1/2	2	2 1/2	3	4
F	15	20	25	32	40	50	60	70	90
L	54	65	72	91	101	122	146	170	210
M	11	12.5	18	19	19	18	20	20.5	16
H	40	48	50	62	70	85	105	125	155
mesh	1x0,5	1x0,5	1x0,5	1x0,5	1x0,5	1x0,5	1x1,8	1x1,8	1x1,8
Filtro µm	400	400	400	500	500	500	800	800	800

PRESSIONI DI ESERCIZIO A 80° C

WORKING PRESSURES AT 80° C

PN 40												p.s.i. 600
PN 32												p.s.i. 450
PN 25												p.s.i. 350
PN 20												p.s.i. 300
PN 16			*	*	*	*	*	*	*	*	*	p.s.i. 250
PN 10												p.s.i. 150
			1/2"	3/4"	1"	1 1/4"	1 1/2"	2"	2 1/2"	3	4	

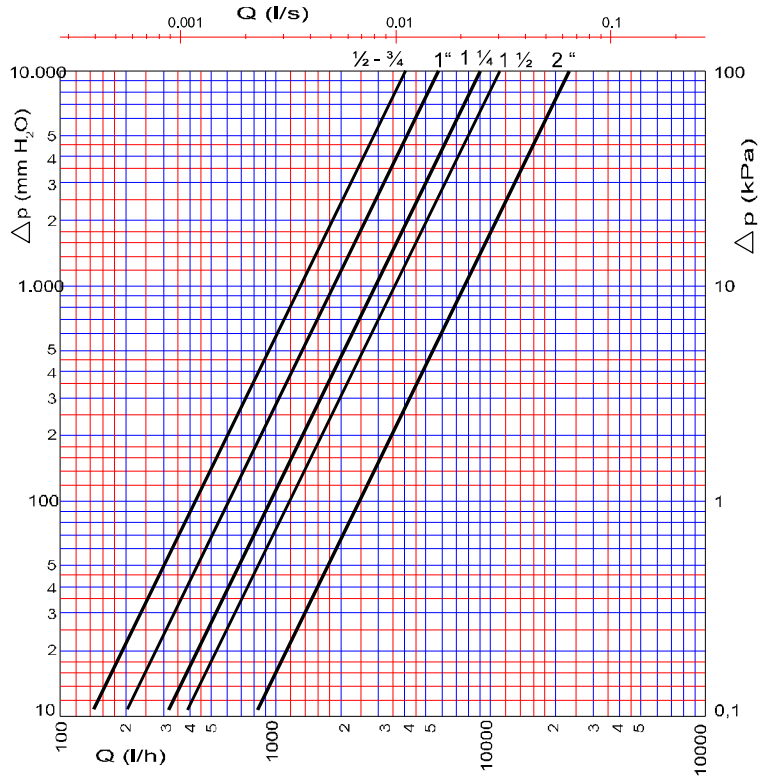
PERDITE DI CARICO

PRESSURE DROPS

R"	1/4	3/8	1/2	3/4	1	1 1/4	1 1/2	2	2 1/2	3	4
Kv	-	-	4,1	5,5	6,8	9	10,6	24,8	-	-	-

$$\Delta P \text{ [mm H}_2\text{O]} = 10.000 \times \left[\frac{G \text{ [mc/h]}}{Kv} \right]^2$$

DIAGRAMMA PERDITA DI CARICO FILTRI A "Y"
 PRESSURE DROP DIAGRAM: "Y" PATTERN FILTER



KV	
1/2 - 3/4	4.1
1	6.8
1 1/4	9
1 1/2	10.6
2	23.8