

# Profile delivers top performance



**Doyma Curaflex sealing systems  
for pipes and cables with **

**EMMER**  
service

Industriestrasse 4 – 4700 EUPEN  
Tel : +32 87 590 680  
Fax : +32 87 590 689  
mailto : [info@emmer.be](mailto:info@emmer.be)  
web : [www.emmer.be](http://www.emmer.be)



Führend durch Wand und Decke



## Curaflex with DPS

New system

New name

Maximum safety with optimum flexibility - the new Doyma Curaflex-System with DPS combines both these features. For 30 years Doyma products have been providing reliable seals for pipes and cables. The unique Doyma DPS is already setting new standards in sealing system technology!



**The highest safety standards**

**Extremely protective seals**

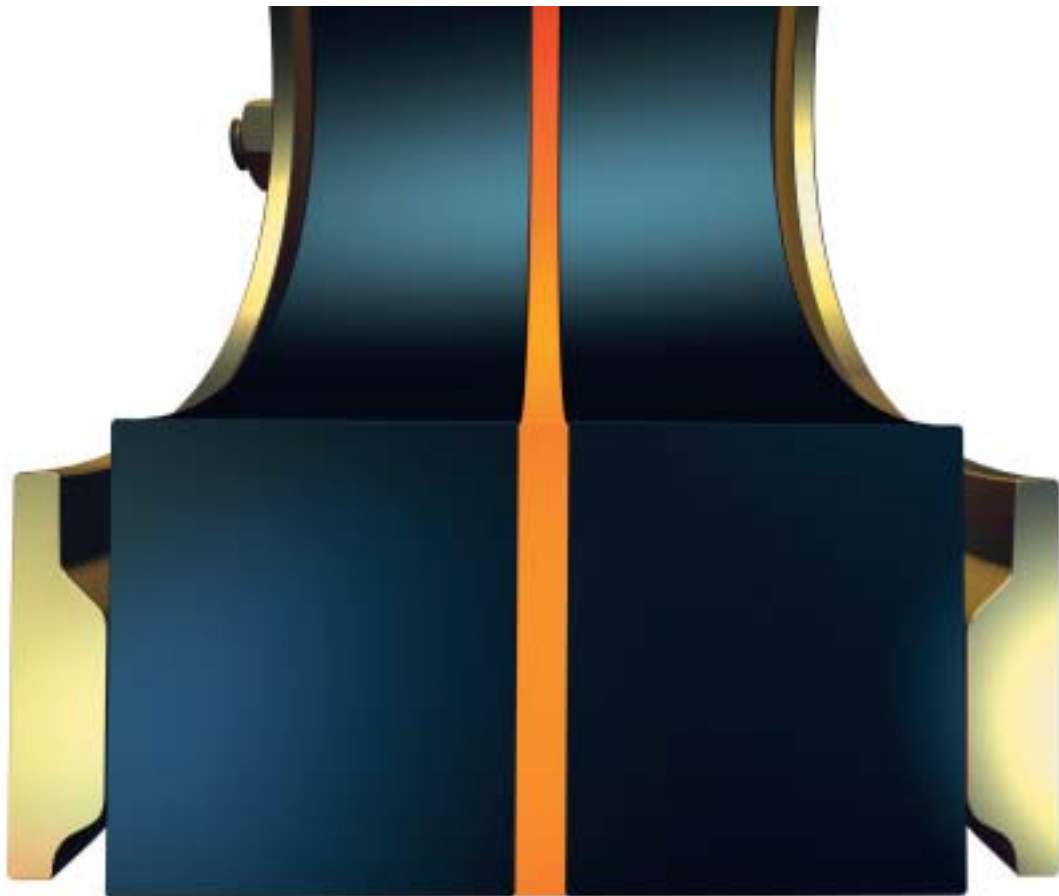
**Optimum flexibility**

**Shorter installation times**

# It's all a question of profile

# DPS

The essential feature of the new Doyma Curaflex-System is the unique DPS "Double Profile System". The two-sided, internal asymmetrical profiling of the steel rings shapes the elastomer with considerably greater efficiency. No other system offers this.



## A strong system

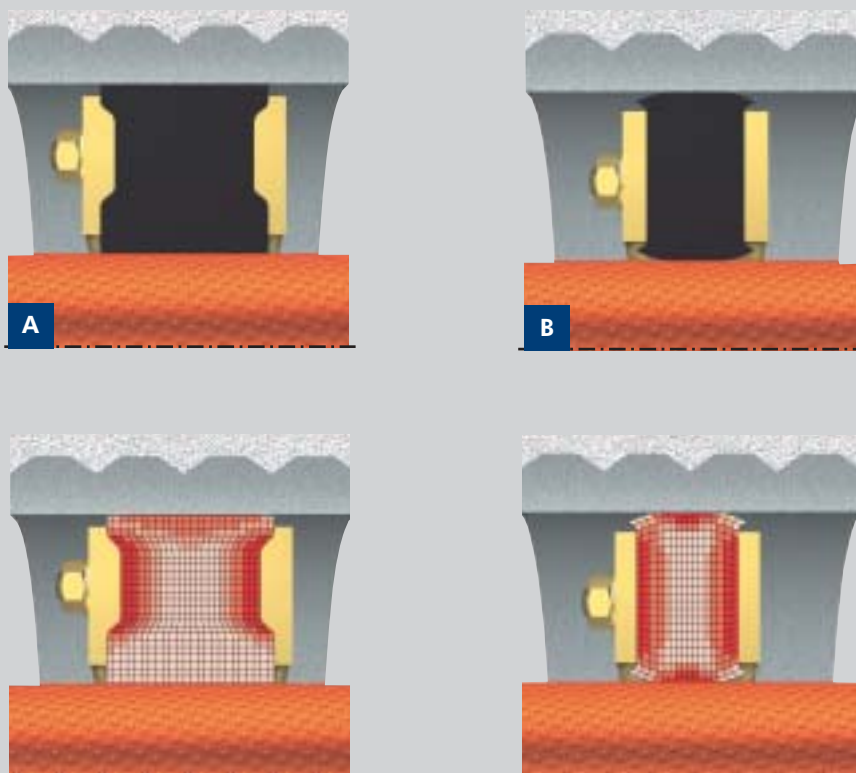
Only the optimum combined action of steel-ring profiling and the new type of special wider elastomers ensures that Doyma gasket inserts achieve significantly improved characteristics. The new Curaflex-System with Doyma DPS is therefore more than just the sum of all parts.

## Shorter installation times

With the Doyma DPS and the new elastomer compound, it is no longer necessary to re-tighten sealing gaskets. There is also a reduction in the number of bolts required. This means quicker installation and safety from the very start.

# Increased safety through larger contact surface

The Doyma DPS provides a much more even seal of the service duct. The width of the individual elastomer seals has also been increased from 20 to 27 mm. This combination increases the actual effective sealing area on the ducted service and core bore or pipe sleeve by almost 100%.



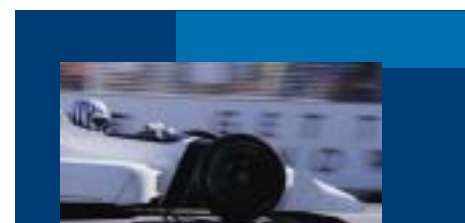
The Doyma DPS features a more intelligent method of pressure distribution. In comparison to conventional gasket inserts, the contact pressure is increased in the direction of the core bore or pipe sleeve. At the same time, the contact pressure on the ducted service is reduced by up to 30%. Delicate services are therefore protected against contraction.

## The Doyma DPS

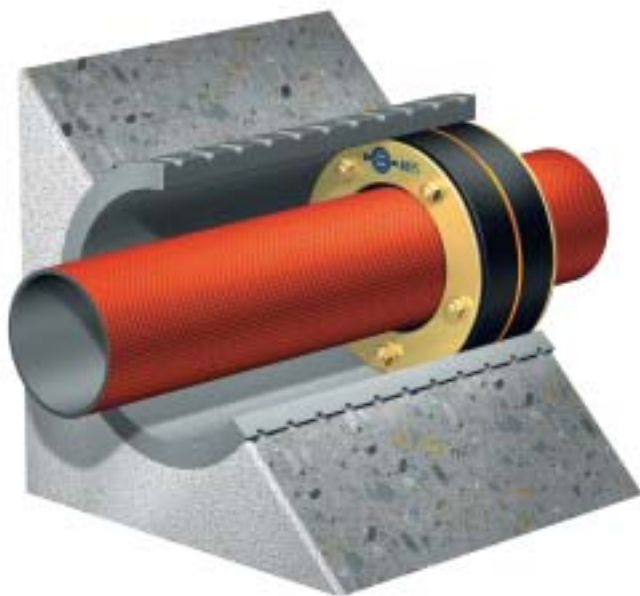
... will reduce the curvature of the sealing faces and will therefore increase the sealing surface by almost 100% (Fig. A). This is an important safety factor, for example, in the case of walls with uneven core bores.

## Traditional gasket inserts

... provide a narrower contact surface due to the stronger curvature of the sealing surface in the installed condition (Fig. B).



# A new system for achieving genuine maximum output

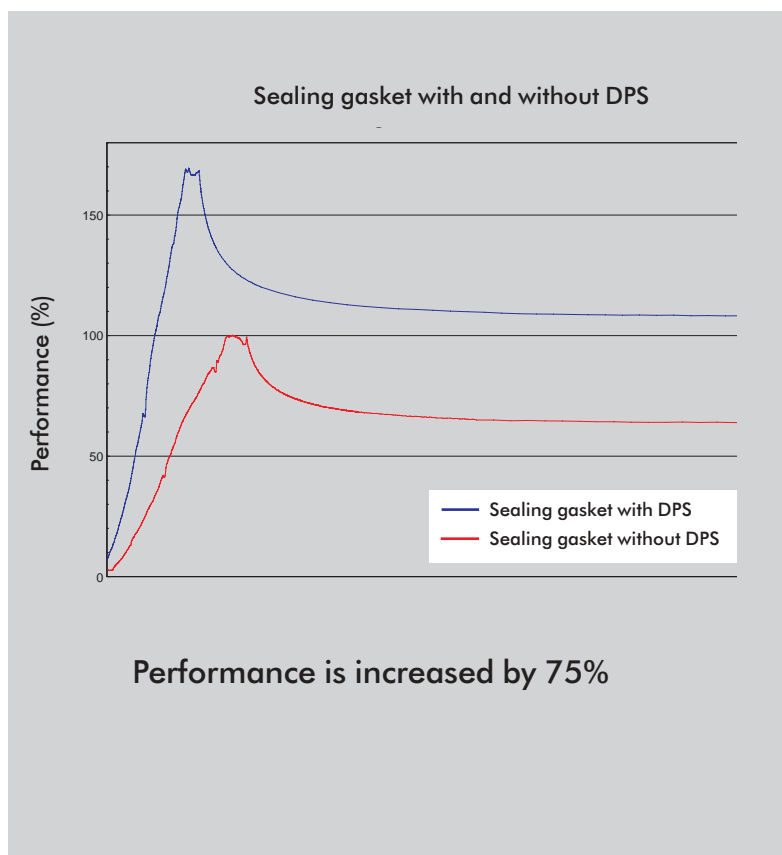


## Flexible centre ring for even more contact surface

The double-sealing gasket insert is used for increased demands, e.g. in the case of pressing water. The new elastomer centre ring reinforces the even force distribution of the "Doyma Grip" seal and therefore creates an even larger contact surface. Its orange colour makes it easy to identify.

The combination of Doyma DPS, wider elastomer seals and the new "Doyma Grip" elastomer compound specially developed for Doyma, increases the pressure seal by approx. 75%.

"Doyma Grip" is a highly non-slip and non-ageing elastomer compound. It prevents friction-reducing substances, e.g. mineral oils used as softeners, from making the gasket insert slip. The new Doyma Curaflex-System with DPS therefore remains permanently flexible and completely reliable.



## Immediate availability in new packaging

There's much more to packaging than just transport protection. For this reason we are now supplying the gasket inserts featuring the Curaflex-System with Doyma DPS in attractive and practical individual packaging, featuring clear item identification, illustrated installation instructions and excellent stackability.

# Number of articles reduced by up to 67%

The new Curaflex-System allows a larger diameter area of service ducting to be sealed per gasket insert. This increased flexibility improves the frequency of stock turnover.

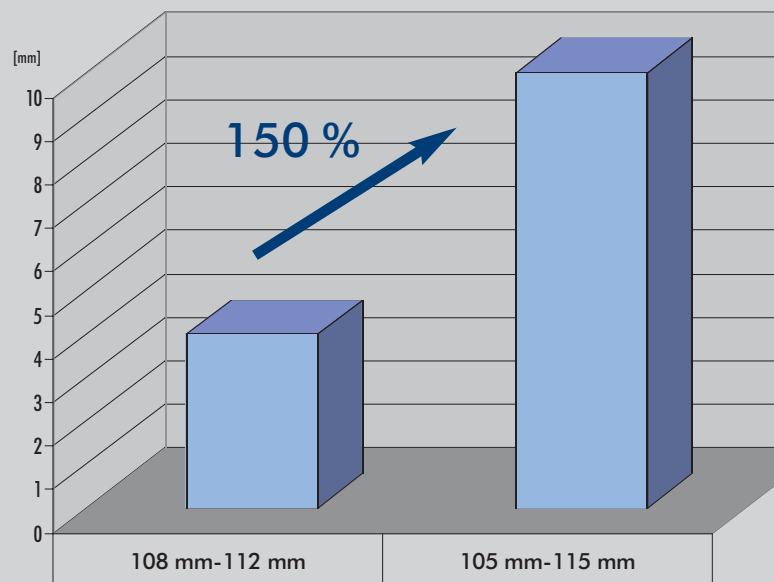
## New product classification for Curaflex with DPS\*

Pipe outer diameter/ cable diameter d [mm]	Pipe sleeve/ core bore diameter
1 - 40	80
41 - 57**	100
58 - 77	125
78 - 104	150
105 - 145**	200
146 - 190**	250
191 - 233**	300
234 - 288**	350
289 - 339	400
340 - 380	450
381 - 430	500

\* up to 350 NB

\*\*Please note: extended classification ranges

## An increased sealing area of up to 150 percent - Example 200 NB



A conventional gasket seals a size range of 108 to 112 mm dia services in a 200 NB duct. The equivalent in the new Curaflex system seals a size range of 105 to 115 mm dia. An increase of 150%!

## Unique flexibility

In the past, services between 105 - 141 mm could be sealed in 200 NB core bores or pipe sleeves. With the new Curaflex-System featuring Doyma DPS, this dimensional range increases to 105 - 145mm. In addition to this, the sealing area of the gasket insert has been extended: in the example of DN 200, the number of different sealing gaskets required is reduced from nine to four.



### DOYMA GmbH & Co

Duct Systems  
 Industriestr. 43-57  
 D - 28876 Oyten  
 Germany  
 Phone (+49) - 42 07 - 91 66 - 550  
 Fax (+49) - 42 07 - 91 66 - 199

www.doyma-de  
 export@doyma.de



DIN EN ISO 9001