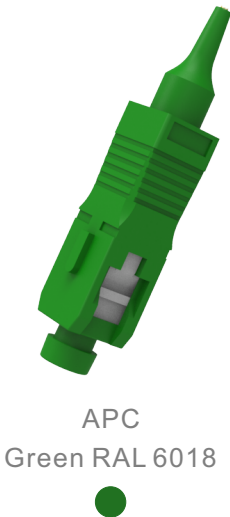


Product Overview

The fiber optic patch cord mainly used on patch panel or for the connection between outlets and terminal equipment.It also widely used for high bit rate data transmission,telecommunications,tesing instruments, active device terminations,LAN/WAN and FTTX.



Optical specifications

Parameters	Value
Type	SC/APC 8°
Typical Insertion Loss	≤0. 20 dB
Max Insertion Loss	≤0. 30 dB
Durability(500 Mating Times)	△ I. L. ≤0. 25 dB
Return Loss	> 60dB
Operating Temperature	-20℃~+70℃
Storage Temperature	-20℃~+70℃

Cable Sructure



Mechanical Diagram

SC/APC 8°0.9mm Connector



Material	1	Dust cap	PE
	2	Outer housing	PBT
	3	Boot	TPE
	4	Cable	Outer Sheath Type:Blue LSZH
			Fiber Type:SM G657A1
			Cable Diameter:0.9mm

Test Procedure

- Optical Characteristics
- Vibration Test
- Thermal Cycling
- Impact Resistance
- Thermal Aging
- Humidity Resistance
- Others

Packaging,Labelling and shipping Marks

- 1.Individual PE bag packing and blister packing are available.
- 2.OEM design is also available upon request.

Other Requirements

The performance of the patch cord has been carfully designed to meet the toughest Telcordia standards

- RoHs-Compliance of item and package
- Performance according to IEC60874-14-10