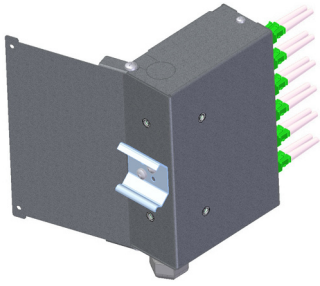


PST-12/DIN FIBRE OPTIC DISTRIBUTION BOX



FEATURES:

- switchable front adapter plates
- hinged opening door on the side wall
- capacity up to 24 splices (depending on the panel used)
- possibility of using hole blinders for front adapter plate
- for installation on 35 mm DIN rails in telecom and electricity cabinets
- cable entry port with DP gland
- made of powder coated corrosion protected steel sheet

EQUIPMENT:

- outer housing
- front adapter plate
- splice protector holders
- cable tie
- protective band for 900 um buffered fibre
- cable gland
- cable guide
- DIN rail bracket

TECHNICAL SPECIFICATIONS:

		PST-12/DIN
maximum number of splices		24 (when using front adapter plate for 12x SC/LC duplex adapters)
adapter capacity		12/24
connector standard		SC/LC
number of cable inputs/outputs		1
entering cable diameter range		7-13 mm
recommended pigtail length [m], 0.9 mm buffered fibre		1
dimensions width/height/depth [mm]	with door closed	50/154/107
	with door open	143/154/107

