

CONTEG DATASHEET

CABLE MANAGEMENT

HIGH DENSITY WIRE MANAGEMENT (HDWM)

CONTEG, spol. s r.o.

Headquarters:

Na Vítězné pláni 1719/4
140 00 Prague 4
Czech Republic
Tel.: +420 261 219 182
Fax: +420 261 219 192

Production plant:

K Silu 2179
393 01 Pelhřimov
Czech Republic
Tel.: +420 565 300 300
Fax: +420 565 533 955

conteg@conteg.com
www.conteg.com

Local Branches/Offices

Austria:	+43 170 659 0115
Benelux:	+32 477 957 126
Eastern Europe / Nordics:	+49 172 8484 346
France / Italy / Maghreb:	+33 686 074 386
Germany / Switzerland:	+420 724 723 184
India:	+91 991 6950 773
Middle East:	+971 4445 2838
Russia / CIS:	+7 495 967 3840
Saudi Arabia:	+966 594 30 13 08
Ukraine:	+380 674 478 240

HIGH DENSITY WIRE MANAGEMENT

Cable management can have a serious impact on the reliability of your data transmissions. Poorly managed cables can adversely affect network throughput, while poorly arranged patch cords can make cabling migration, addons and changes difficult to achieve.

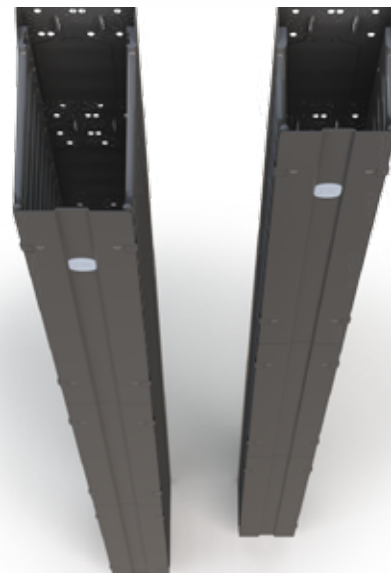
High Density Wire Managers will help to improve network performance and reliability by reducing the risk of attenuation due to fiber micro bends. The horizontal and vertical pathways come in two sizes - standard and long. They can hold a large number of path cables without exceeding the TIA/EIA/ISO recommended fill factor. With the longer size option you can manage up to 48 patch cords (Cat.7 or higher) in a 1U position. Thanks to their modern design, backbone and patch, cables are well organized in accordance with industry standards and recommendations from major cable manufacturers. They will easily meet all your cabling needs.

- New design for 48 patch cords (Cat.7A) at 1U position
- Unbeatable density of the patch cords
- Bend radius control
- Allow to install up to 2016 patch cords at the rack
- Unique latching system of the front panels
- Front or Front/rear design layout available
- Wide range of the sizes usable for all typical applications

HDWM-VMR-42-19/10F



HDWM-VMR-42-12/10F

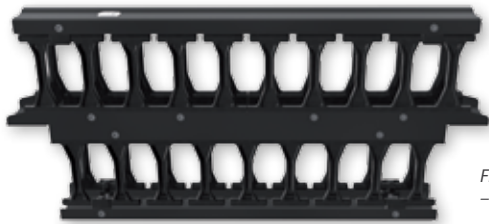


HIGH DENSITY WIRE MANAGER CABLE FILL CALCULATOR

HIGH DENSITY WIRE MANAGER CABLE FILL CALCULATOR						
Code	Description	Cable Details	Number of Cables			
			Cat 6 UTP	Cat 6A UTP	Cat 7 PiMF	Custom
			Ø (mm)	5,870	7,239	7,620
	Fill Factor		50 %			
VERSION STANDARD						
HDWM-HM-1F	Horizontal HDWM, 1U x 10 finger front only 1U x 19" x 112mm	x	50	33	30	27
HDWM-VMR-42-12/10F	Vertical High Density Rack Wire Manager, 41 fingers, front only, 42U x 100 x 112mm	x	184	121	109	99
HDWM-VMF-42-15/20F	Vertical High Density Frame Wire Manager, 41 fingers, front only, 42U x 151 x 200mm	x	507	333	301	273
HDWM-VMF-42-25/20F	Vertical High Density Frame Wire Manager, 41 fingers, front only, 42U x 251 x 200mm	x	913	600	541	491
HDWM-VMF-42-25/30F	Vertical High Density Frame Wire Manager, 41 fingers, front only, 42U x 251 x 300mm	x	1411	928	837	760
Finger Opening Standard	Capacity of finger opening - version standard	x	47	31	28	25
VERSION LONGER						
HDWM-HML-1F	Horizontal HDWM, 1U x 10 long finger front only 1U x 19" x 182mm	x	92	60	54	49
HDWM-VMR-42-19/10F	Vertical High Density Rack Wire Manager, 41 long fingers, front only, 42U x 100 x 182mm	x	312	205	185	168
HDWM-VMF-42-22/20F	Vertical High Density Frame Wire Manager, 41 long fingers, front only, 42U x 221 x 200mm	x	791	520	469	426
HDWM-VMF-42-32/20F	Vertical High Density Frame Wire Manager, 41 long fingers, front only, 42U x 321 x 200mm	x	1197	787	710	644
HDWM-VMF-42-32/30F	Vertical High Density Frame Wire Manager, 41 long fingers, front only, 42U x 321 x 300mm	x	1851	1217	1098	996
Finger Opening Long	Capacity of finger opening - version longer	x	92	60	54	49



Front only design
– HDWM-WM-3F



Front/rear design
– HDWM-HM-1FR



DESCRIPTION:

Front/rear design

- Dual pathway for managing cables within the same HDWM
- Horizontal and vertical orientations, vertical racks (VMR) are for front only

Front only design

- Simple pathway for cables
- Available in horizontal and vertical orientations

Horizontal orientation

- Horizontal pathway for managing cables among the installed equipment
- Mounting onto 19" extrusions

Vertical orientation

- Vertical pathway for managing cables into and through the rack or frame
- Velcro cable ties for optimum cable bundle management
- Vertical managers can be bolted together (front to back) to customize the HDWM to your requirements

Frame vertical panel (VMF)

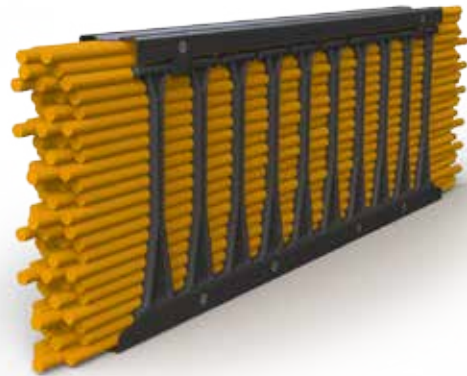
- 3 mm thick aluminum ensures high rigidity and structural strength
- Easy installation on RSG frames

Cable Troughs

- Allow the management of cables between vertical rack (VMR) or frame (VMF) HDWM
- Adjustable length

Sizes

- Fingers come in two sizes - standard and long



HDWM-FDF-S3-20B
front duct system, compatible with HDWM-VMF-xx-yy/20F installed on the both sides

INSTALLATION

vertical High Density Wire Managers can be installed in any type of standard vertical 19" extrusions

HDWM-HM-1FR

front/rear horizontal 1U High Density Wire Manager, applicable in both rack and frame deployments

front/rear horizontal 2 or 3U High Density Wire Manager with brush also available

HDWM-HM-2F

front horizontal 2U High Density Wire Manager, applicable in both rack and frame deployments

HDWM-VMR-ACT

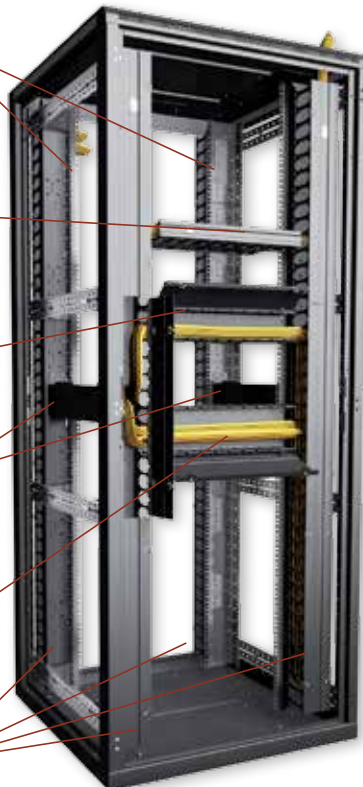
horizontal adjustable cable troughs to lead the cables between front and rear vertical rack High Density Wire Managers

HDWM-HM-3F

front horizontal 3U High Density Wire Manager, applicable in both rack and frame deployments

HDWM-VMR-42-12/10F

front vertical High Density Wire Managers, applicable in rack deployment



HDWM-VMF-47-15/20F

front vertical High Density Wire Manager, applicable in frame deployments

HDWM-VMF-47-15/20F

front vertical High Density Wire Manager, applicable in frame deployments

HDWM-VMF-ACT

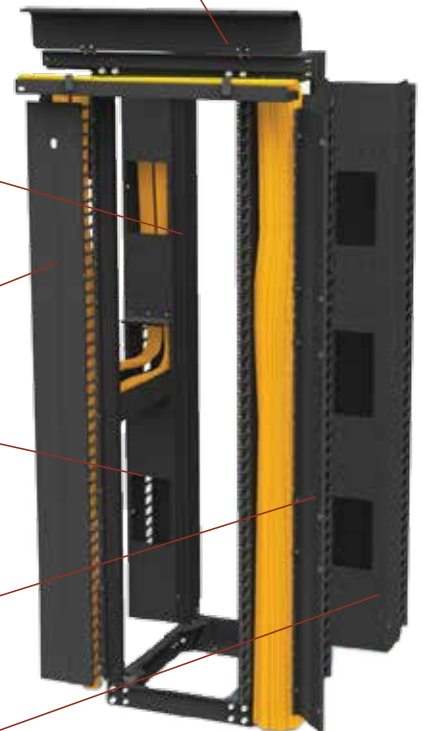
horizontal adjustable cable troughs to lead the cables between front and rear vertical open frame High Density Wire Managers

HDWM-VMF-47-25/20F (2 x)

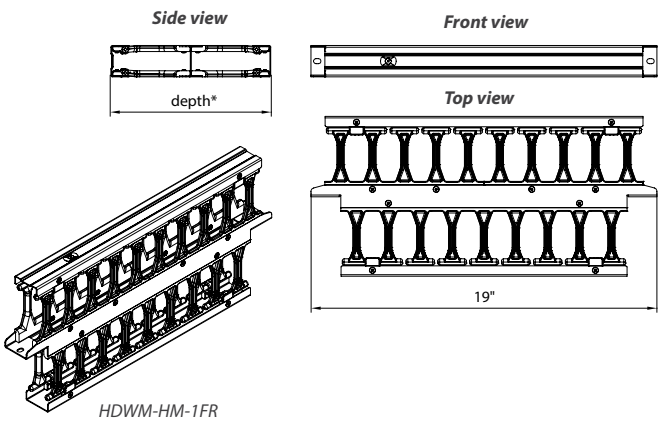
front wire managers shown joined to give front & rear cable management, applicable in frame deployments

HDWM-VMF-47-25/30F

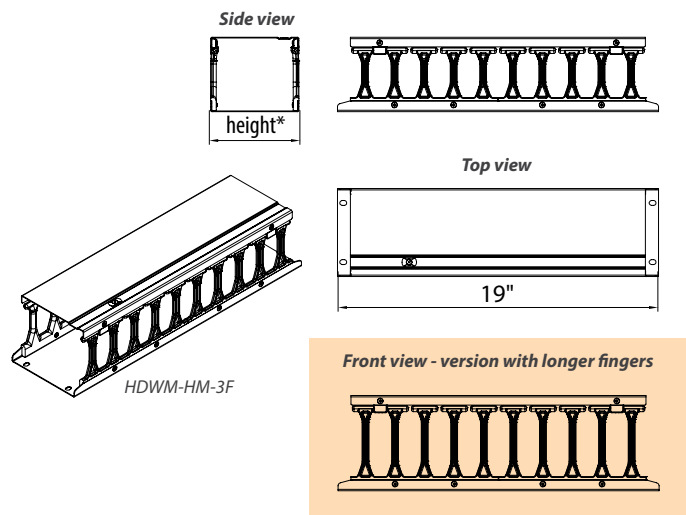
front vertical High Density Wire Manager, applicable in frame deployments



HORIZONTAL HIGH DENSITY WIRE MANAGERS – FRONT/REAR



HORIZONTAL HIGH DENSITY WIRE MANAGERS – FRONT ONLY

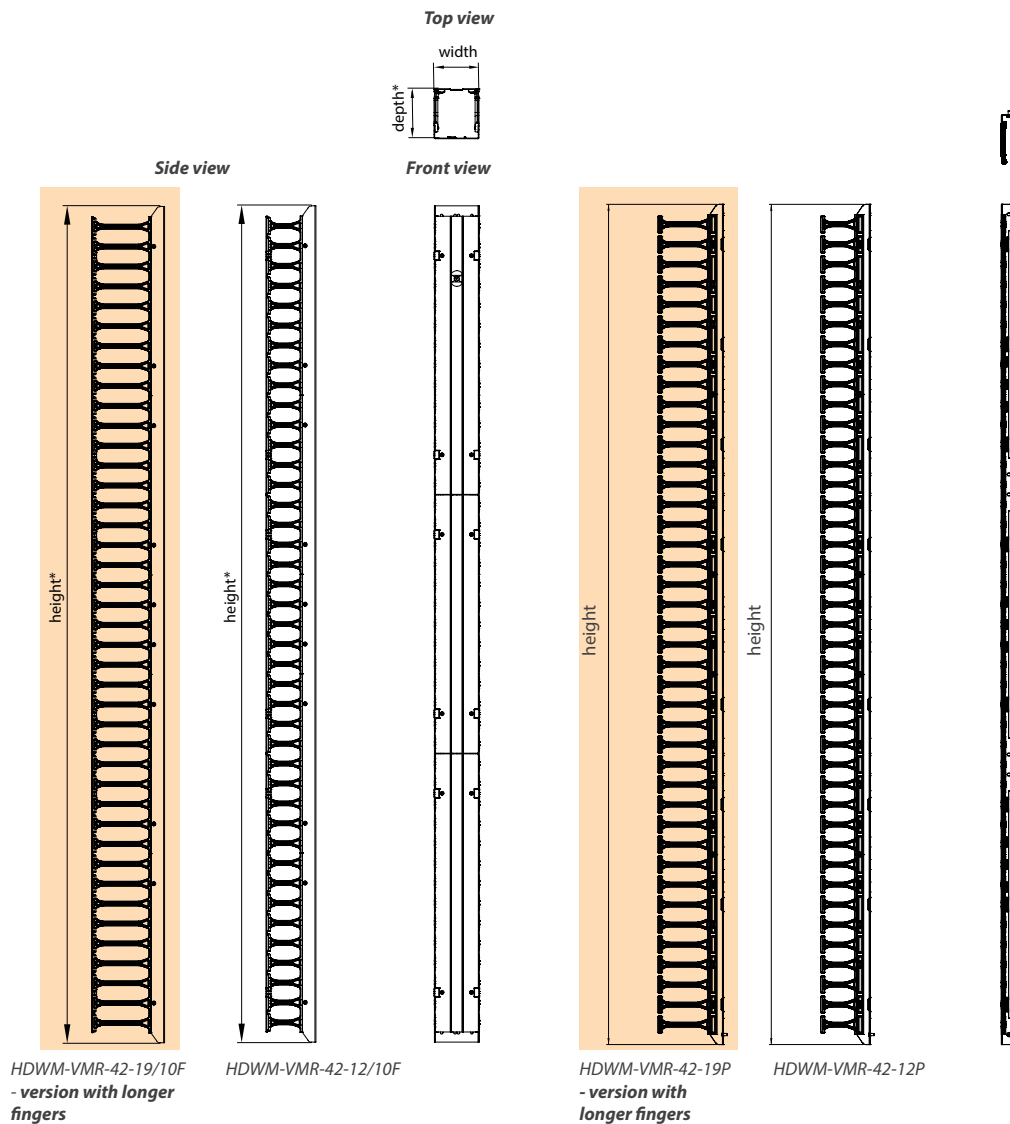
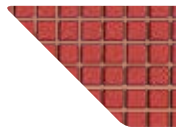


HORIZONTAL HIGH DENSITY WIRE MANAGERS										
Code	Installation	Type	No. of fingers		Dimensions			Extended version with longer fingers		
			Front	Rear	H in U	W	D in mm	Code	D in mm	
HDWM-HM-1F	Open frame/rack	Front	10	x	1	19"	112	HDWM-HML-1F	182	
HDWM-HM-1FR	Open frame/rack	Front/rear	10	9	1	19"	223	HDWM-HML-1FR	363	
HDWM-HM-2F	Open frame/rack	Front	10	x	2	19"	112	HDWM-HML-2F	182	
HDWM-HM-2FR	Open frame/rack	Front/rear	10	9	2	19"	223	HDWM-HML-2FR	363	
HDWM-HM-2FRB	Open frame/rack	Front/rear, brush	10	9	2	19"	223	HDWM-HML-2FRB	363	
HDWM-HM-3F	Open frame/rack	Front	10	x	3	19"	112	HDWM-HML-3F	182	
HDWM-HM-3FR	Open frame/rack	Front/rear	10	9	3	19"	223	HDWM-HML-3FR	363	
HDWM-HM-3FRB	Open frame/rack	Front/rear, brush	10	9	3	19"	223	HDWM-HML-3FRB	363	

Standard equipment: manager, installation instructions, 4 mounting kits

VERTICAL HIGH DENSITY WIRE MANAGERS – RACK INSTALLATION



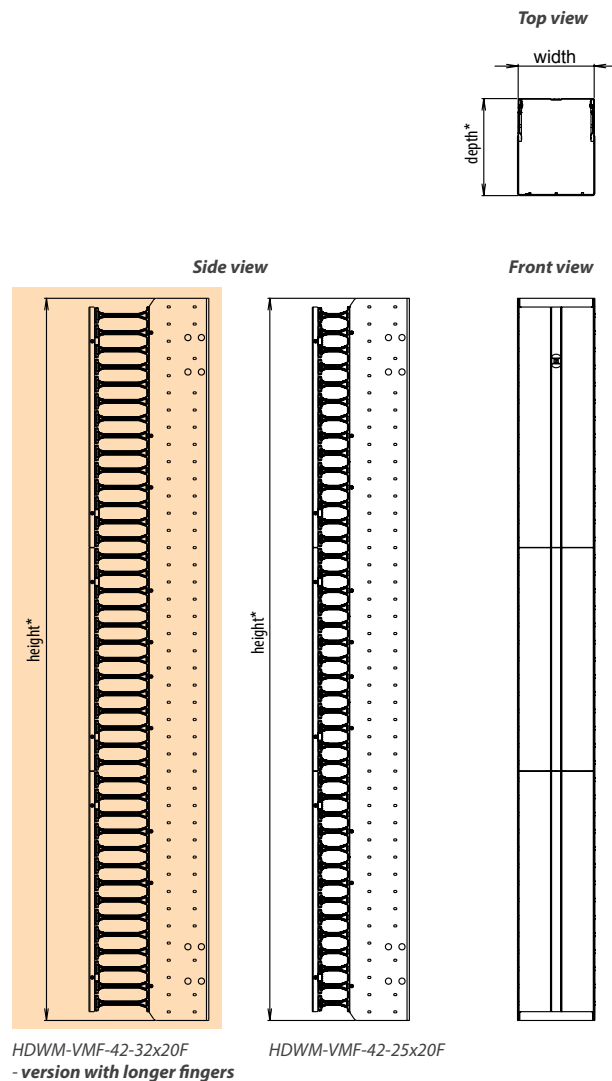


VERTICAL HIGH DENSITY WIRE MANAGERS – RSG OPEN FRAME INSTALLATION

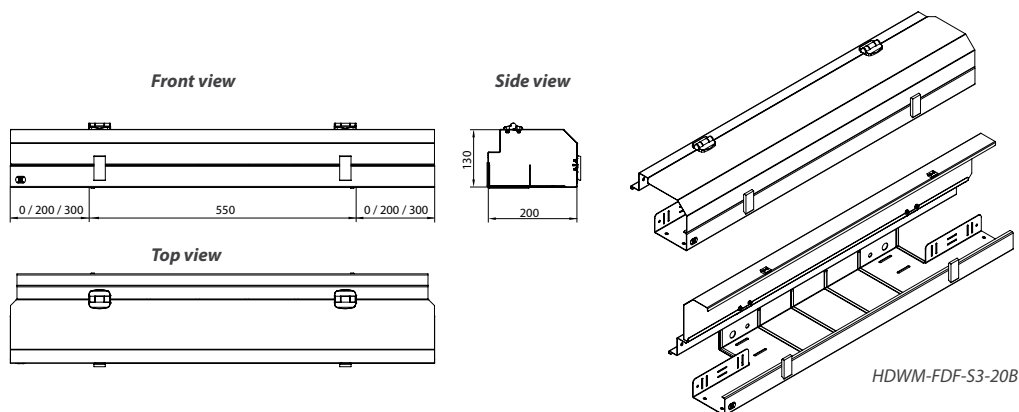
VERTICAL HIGH DENSITY WIRE MANAGERS									
Code	Installation	Type	No. of fingers		Dimensions			Extended version with longer fingers	
			Front	Rear	H in U	W in mm	D in mm	Code	D in mm
HDWM-VMR-42-12/10F	Rack	Front	41	x	42	100	112	HDWM-VMR-42-19/10F	182
HDWM-VMR-45-12/10F	Rack	Front	44	x	45	100	112	HDWM-VMR-45-19/10F	182
HDWM-VMR-48-12/10F	Rack	Front	47	x	48	100	112	HDWM-VMR-48-19/10F	182
HDWM-VMR-42-12L	Rack	L-type extrusion One Row	41	x	42	-	112	HDWM-VMR-42-19L	182
HDWM-VMR-45-12L	Rack	L-type extrusion One Row	44	x	45	-	112	HDWM-VMR-42-19P	182
HDWM-VMR-48-12L	Rack	L-type extrusion One Row	47	x	48	-	112	HDWM-VMR-45-19L	182
HDWM-VMR-42-12P	Rack	P-type extrusion One Row	41	x	42	-	112	HDWM-VMR-45-19P	182
HDWM-VMR-45-12P	Rack	P-type extrusion One Row	44	x	45	-	112	HDWM-VMR-48-19L	182
HDWM-VMR-48-12P	Rack	P-type extrusion One Row	47	x	48	-	112	HDWM-VMR-48-19P	182
HDWM-VMF-42-15/20F	Open frame	Front ¹	41	x	42	200	151	HDWM-VMF-42-22/20F	221
HDWM-VMF-45-15/20F	Open frame	Front ¹	44	x	45	200	151	HDWM-VMF-45-22/20F	221
HDWM-VMF-47-15/20F	Open frame	Front ¹	46	x	47	200	151	HDWM-VMF-47-22/20F	221
HDWM-VMF-42-25/20F	Open frame	Front ¹	41	x	42	200	251	HDWM-VMF-42-32/20F	321
HDWM-VMF-45-25/20F	Open frame	Front ¹	44	x	45	200	251	HDWM-VMF-45-32/20F	321
HDWM-VMF-47-25/20F	Open frame	Front ¹	46	x	47	200	251	HDWM-VMF-47-32/20F	321
HDWM-VMF-42-25/30F	Open frame	Front ¹	41	x	42	300	251	HDWM-VMF-42-32/30F	321
HDWM-VMF-45-25/30F	Open frame	Front ¹	44	x	45	300	251	HDWM-VMF-45-32/30F	321
HDWM-VMF-47-25/30F	Open frame	Front ¹	46	x	47	300	251	HDWM-VMF-47-32/30F	321

Standard equipment: manager including blanking panels, installation instructions, mounting hardware, 10 velcro ties HDWM-VCT (One Row only 5 x HDWM-VCT-S)

¹ For front/rear design simply order respective front managers and install them easily at the installation site with enclosed hardware which is delivered in each box as standard; the standard and longer version may be combined too.

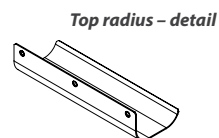
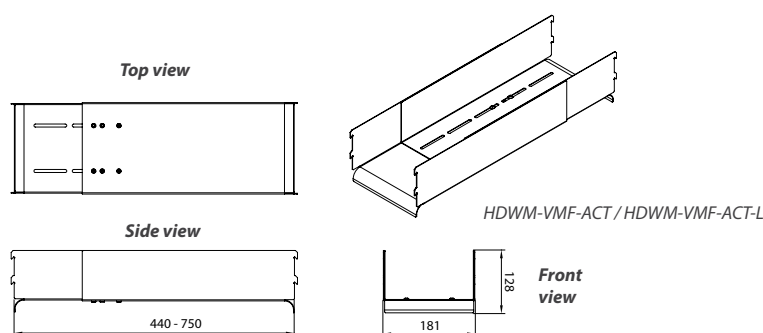


FRONT DUCT SYSTEM COMPATIBLE WITH VERTICAL HDWM – RSG OPEN FRAME INSTALLATION



FRONT DUCT SYSTEM COMPATIBLE WITH VERTICAL HDWM		
Code	Installation	Description
HDWM-FDF-S3-20L	Open frame	Front duct system, compatible with HDWM-VMF-xx-yy/20F installed on the left-hand side, 1x cable radius protector included
HDWM-FDF-S3-20R	Open frame	Front duct system, compatible with HDWM-VMF-xx-yy/20F installed on the right-hand side, 1x cable radius protector included
HDWM-FDF-S3-20B	Open frame	Front duct system, compatible with HDWM-VMF-xx-yy/20F installed on the both sides, 2x cable radius protector included
HDWM-FDF-S3-30L	Open frame	Front duct system, compatible with HDWM-VMF-xx-yy/30F installed on the left-hand side, 1x cable radius protector included
HDWM-FDF-S3-30R	Open frame	Front duct system, compatible with HDWM-VMF-xx-yy/30F installed on the right-hand side, 1x cable radius protector included
HDWM-FDF-S3-30B	Open frame	Front duct system, compatible with HDWM-VMF-xx-yy/30F installed on the both sides, 2x cable radius protector included
HDWM-FDF-S3-20L30R	Open frame	Front duct system, compatible with HDWM-VMF-xx-yy/20F installed on the left-hand side and HDWM-VMF-xx-yy/30F installed on the right-hand side, 2x cable radius protector included
HDWM-FDF-S3-30L20R	Open frame	Front duct system, compatible with HDWM-VMF-xx-yy/30F installed on the left-hand side and HDWM-VMF-xx-yy/20F installed on the right-hand side, 2x cable radius protector included
HDWM-FDF-S3-EC	Open frame	End cap for front duct system, 2 pcs

ADJUSTABLE CABLE TROUGH FOR VERTICAL HDWM – RSG OPEN FRAME INSTALLATION

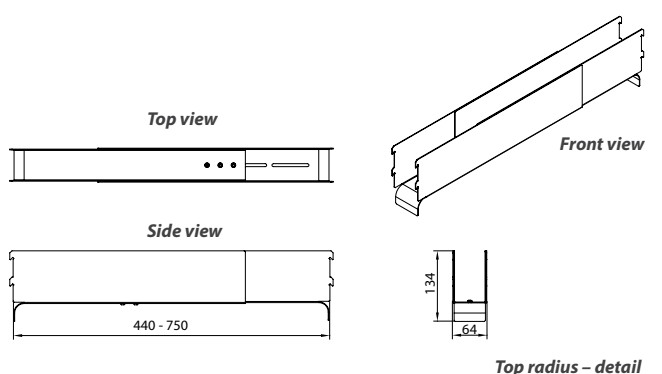


HDWM-FSS-50

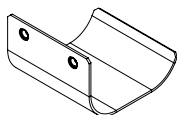


HDWM-VCT-S

ADJUSTABLE CABLE TROUGH FOR VERTICAL HDWM – RACK INSTALLATION



Top radius – detail



HDWM-VCT-B



HDWM-VCT



HDWM-VCT

For available sizes of HDWM-VMR-ACT please see table on page 104.

Note: All dimensions in mm

ACCESSORIES FOR HIGH DENSITY WIRE MANAGERS

Code	Description
HDWM-VMR-19	Bracket for attachment of HDWM-VMR-xx-xx/xxF to 19" profiles (not required for ROF/RHF/RDF/RSF)
HDWM-VMR-ACT	Adjustable Cable Trough - for front-to-rear cable management between front and rear mounted VMR, top radius included, range 440 to 750 mm*
HDWM-VMF-ACT	Adjustable Cable Trough - for front-to-rear cable management between front and rear mounted VMF, top radius included, range 440 to 750 mm
HDWM-VMR-ACT-L	Adjustable Cable Trough - Long - for front-to-rear cable management between front and rear mounted VMR, top radius included, range 680 to 1150 mm*
HDWM-VMF-ACT-L	Adjustable Cable Trough - Long - for front-to-rear cable management between front and rear mounted VMF, top radius included, range 680 to 1150 mm
HDWM-VMF-B15	Bracket for attachment of HDWM-VMF-xx-15/xxF to back of open frame (not required for RSG)
HDWM-VMF-B25	Bracket for attachment of HDWM-VMF-xx-25/xxFR to back of open frame (not required for RSG)
HDWM-VMF-BLANK-42	Blank panel kit to close ACT holes for 42U VMF range of wire managers
HDWM-VMF-BLANK-45	Blank panel kit to close ACT holes for 45/47U VMF range of wire managers
HDWM-FSS-50	Fiber Storage Spools, 50 mm deep, pair, including mounting hardware
HDWM-FSS-100	Fiber Storage Spools, 100 mm deep, pair, including mounting hardware
HDWM-VCT-B	Velcro Cable Belt, 13x5000 mm, 1 pc, black
HDWM-VCT-S	Velcro Cable Ties-small, 13x190 mm, pack of 25 pcs, black
HDWM-VCT	Velcro Cable Ties, 25x300 mm, pack 10, black

* not compatible with divided rear extrusions of RSF rack