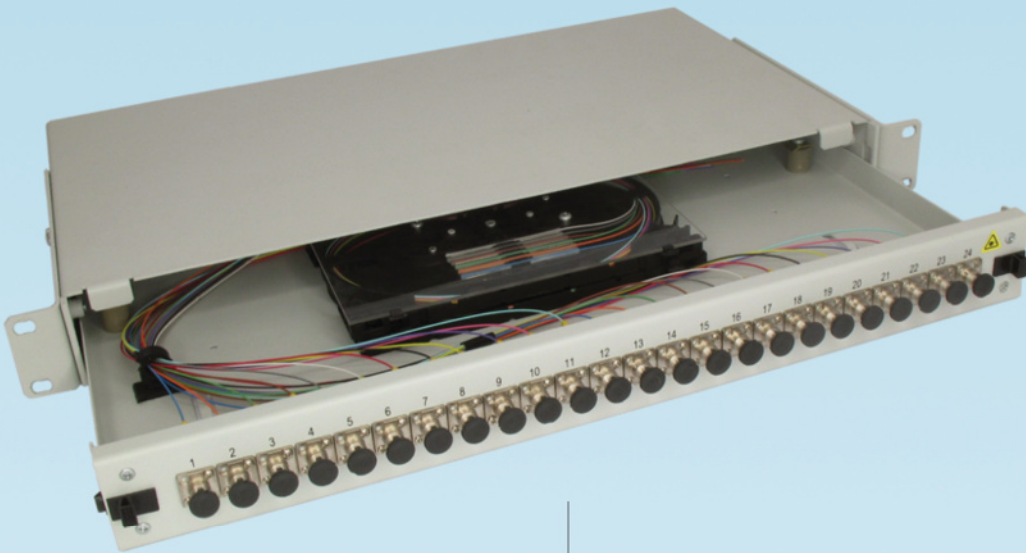
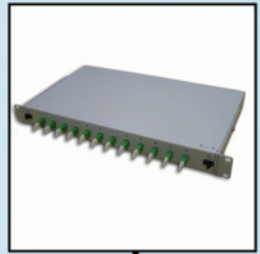


- 1U
- 19"
- Sliding



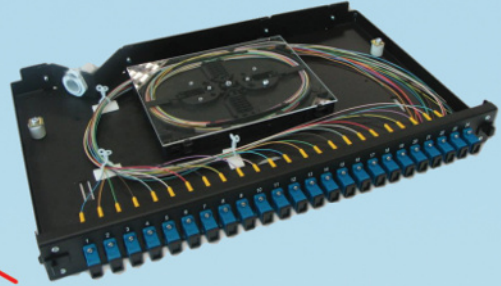
Easy to open

Various types of front panels



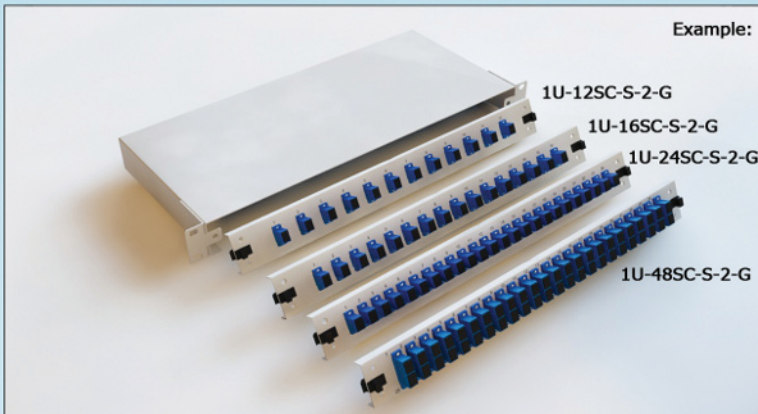
- Two elements for kevlar fixation
- Ejected patchpanel is hanging down in angle of 40 degrees and is easily accessible

Front panels



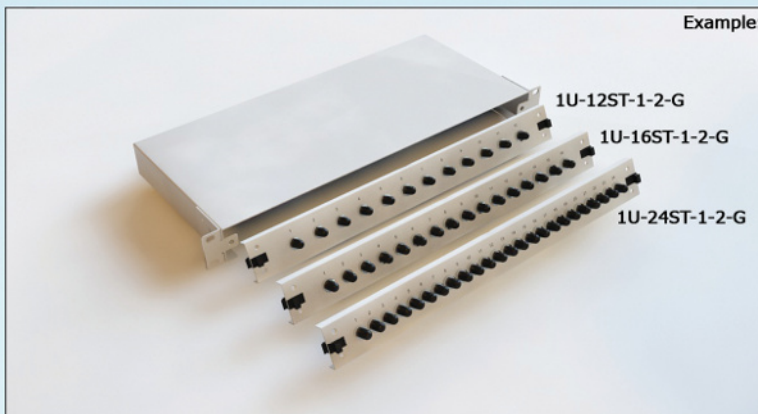
SC

Code	Port type	Mode	Version	Colour
1U	12SC	O = empty	1 = empty	G = light grey RAL7035
	16SC	A = OS2 (APC 9/125)	2 = with adapters	B = black RAL9005
	24SC	S = OS2 (9/125)	3 = with adapters & enclosure	
	48SC	1 = OM1 (62,5/125)	4 = fully loaded	
		2 = OM2 (50/125)		
		3 = OM3 (50/125)		
		4 = OM4 (50/125)		



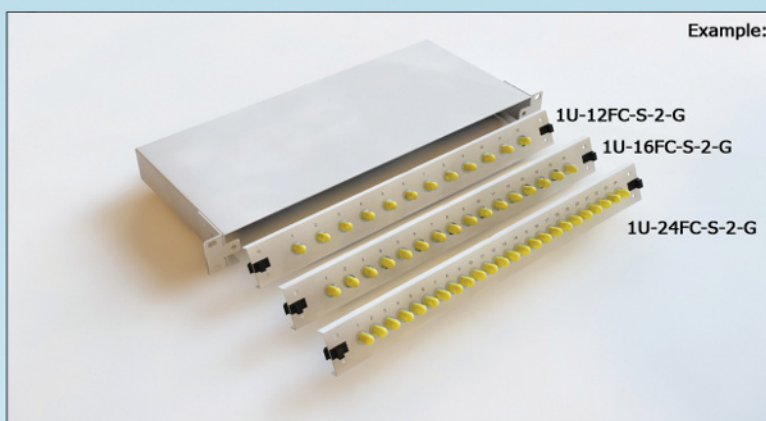
ST

Code	Port type	Mode	Version	Colour
1U	12ST	O = empty	1 = empty	G = light grey RAL7035
	16ST	S = OS2 (9/125)	2 = with adapters	B = black RAL9005
	24ST	1 = OM1 (62,5/125)	3 = with adapters & enclosure	
		2 = OM2 (50/125)	4 = fully loaded	
		3 = OM3 (50/125)		
		4 = OM4 (50/125)		



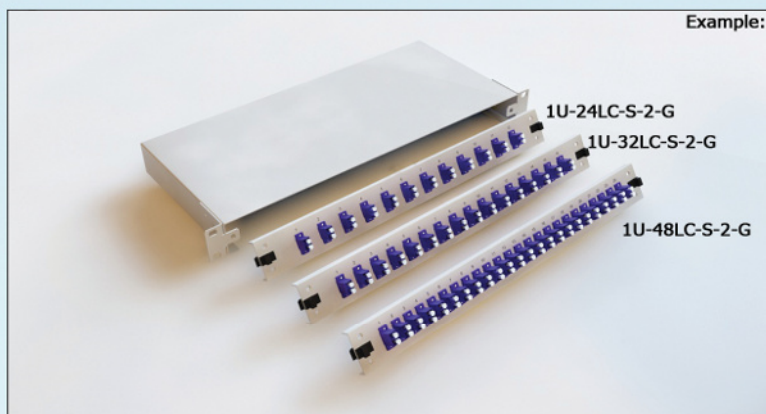
FC

Code	Port type	Mode	Version	Colour
1U	12FC	O = empty	1 = empty	G = light grey RAL7035
	16FC	A = OS2 (APC 9/125)	2 = with adapters	B = black RAL9005
	24FC	S = OS2 (9/125)	3 = with adapters & enclosure	
		1 = OM1 (62,5/125)	4 = fully loaded	
		2 = OM2 (50/125)		
		3 = OM3 (50/125)		
		4 = OM4 (50/125)		



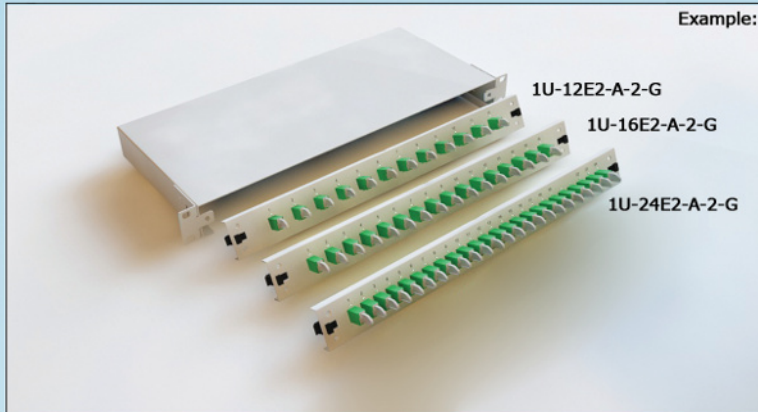
LC

Code	Port type	Mode	Version	Colour
1U	24LC	O = empty	1 = empty	G = light grey RAL7035
	32LC	A = OS2 (APC 9/125)	2 = with adapters	B = black RAL9005
	48LC	S = OS2 (9/125)	3 = with adapters & enclosure	
		1 = OM1 (62,5/125)	4 = fully loaded	
		2 = OM2 (50/125)		
		3 = OM3 (50/125)		
		4 = OM4 (50/125)		



FC

Code	Port type	Mode	Version	Colour
1U	12E2	O = empty	1 = empty	G = light grey RAL7035
	16E2	A = OS2 (APC 9/125)	2 = with adapters	B = black RAL9005
	24E2	S = OS2 (9/125)	3 = with adapters & enclosure	
		1 = OM1 (62,5/125)	4 = fully loaded	
		2 = OM2 (50/125)		
		3 = OM3 (50/125)		
		4 = OM4 (50/125)		



Included in packaging

- Standard back entries of patchpanel: 2x angled back plate including cable glang PG13,5
- 1x M6 kit (for mounting patchpanel to rack)
- 2x twister & 2x cable tie -- for patchpanels up to 24 ports/fibers
- 4x twister & 4x cable tie -- for 48 ports/fibers patchpanels
- Splice protections: heat shrink type L=45mm, D=2,5mm
- Each splice cassette is equipped with 2x 12-position splice holder (equal to number of ports)
- Some patchpanels are available in grey and also black version
 - Standardly we supply the grey version (RAL7035)
 - For black version (RAL9005), please add character B to the end of "Ordering code" in your PO

