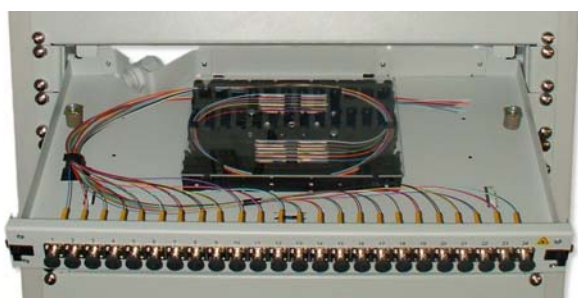


Product description



Advantages

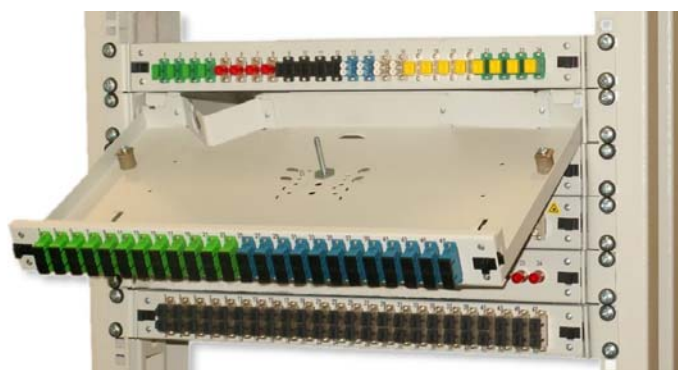
- Mounted and screwed adapters
- Large splicing cassette with easy-open system (for later inspection)
- Pigtails mounted with defined radius of curvature
- Colored fibers of pigtails – easier to splice.
- Pigtails are with easystrip buffer – easy to strip 100cm at once

Parameters

Dimensions:	Width: 482 mm, Height: 44 mm, Depth: 251 mm
Adaptor types:	all standard simplex and duplex types
Number of splice cassettes:	up to 4 pieces
Cable entry plate types:	variously cable entry plates for PG or Metric, with possibility to change the links/right and straight/angled cable entry
Drawer:	being opened it will stand hanging in 40° angle. It also can be removed without additional tools
Color:	powder coating RAL 7035 light gray
Material:	complete steel execution, with plastic ledges

Features – Patch Panel

- Drawer version, with easy and quick opening system
- By open drawer will stay hanging in 40° angle
- It also can be removed without additional tools



Datasheet no:	16	Part no:		Revision	A
Description					
Created by:	Mozgunov Dmitry	Date:	December 8, 2006		
Approved by:	Peter Lowy	Date:	December 8, 2006		
Sylex s.r.o. Address: Mlynské luhy 31, 821 05 Bratislava, Slovak Republic; E-mail: info@sylex.sk					

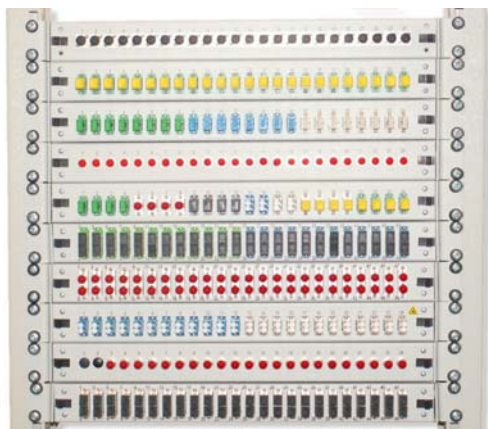


- Optimal dimensions (insertion depth 250mm) in compliance with bending radius
- Adjustable mounting depth through adjustable angles

- Integrated adjustable splice cassette holder with rotation protection
- Designed for use of 4 cassettes
- By using as Breakout box holder could be easily removed



Features – Front Plates



- Removable front plates with wipe proof signature
- Available for all standard connector types

Features – Cable Entry Plates

- Available plates for PG or Metric
- Possible to change the links/right and straight/angled cable entry



Datasheet no:	16	Part no:		Revision	A
Description					
Created by:	Mozgunov Dmitry	Date:	December 8, 2006		
Approved by:	Peter Lowy	Date:	December 8, 2006		
Sylex s.r.o. Address: Mlynské luhy 31, 821 05 Bratislava, Slovak Republic; E-mail: info@sylex.sk					