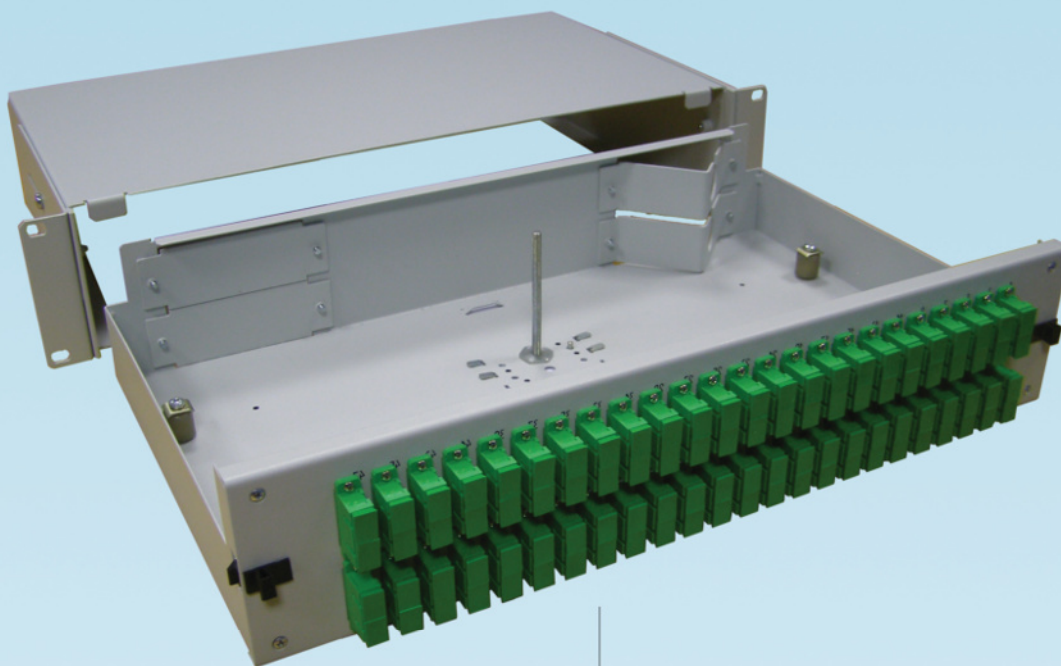
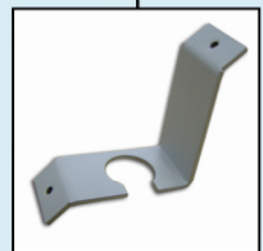
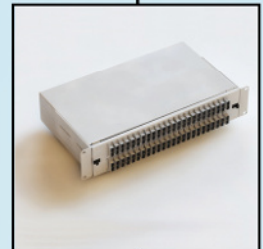
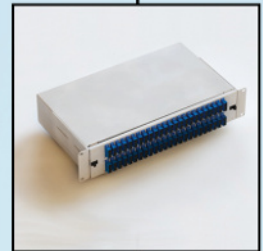
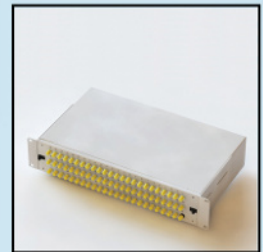


- 2U
- 19"
- Sliding



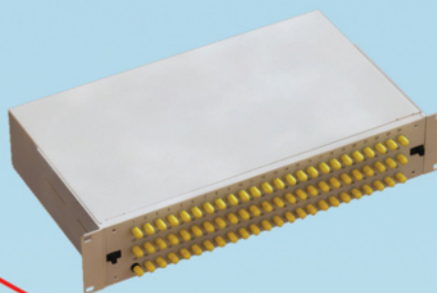
Easy to open

Various types of front panels



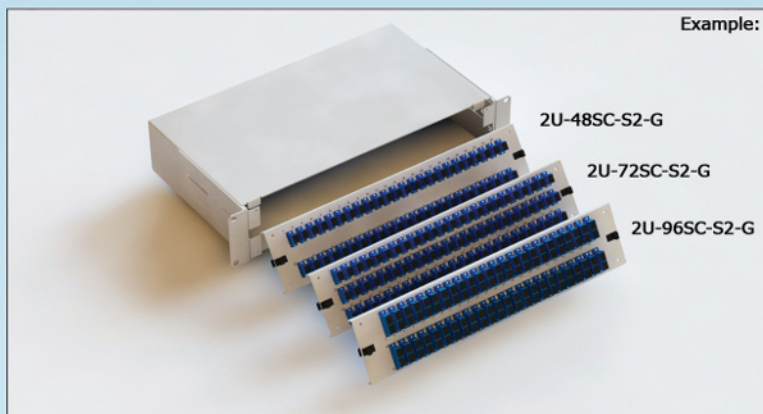
- Two elements for kevlar fixation
- Ejected patchpanel is hanging down in angle of 40 degrees and is easily accesible
- Subsystem of optical network
- Colour light grey RAL7035

### Front panels



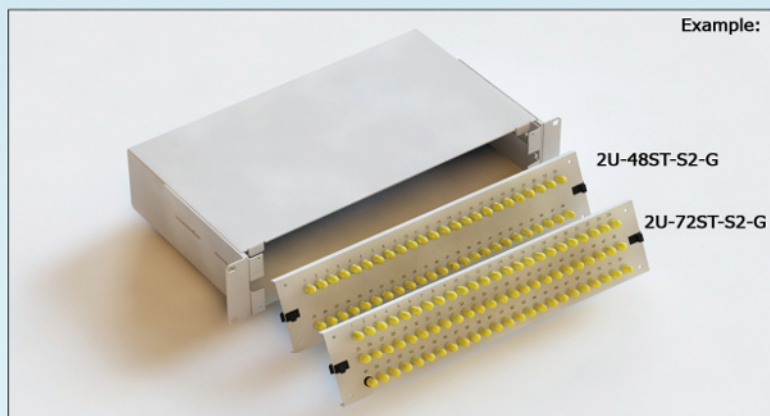
#### SC

Code	Port type	Mode	Version	Colour
2U	48SC	O = empty	1 = empty	G = light grey RAL7035
	72SC	A = OS2 (APC 9/125)	2 = with adapters	
	96SC	S = OS2 (9/125)	3 = with adapters & enclosure	
		1 = OM1 (62,5/125)	4 = fully loaded	
		2 = OM2 (50/125)		
		3 = OM3 (50/125)		
		4 = OM4 (50/125)		



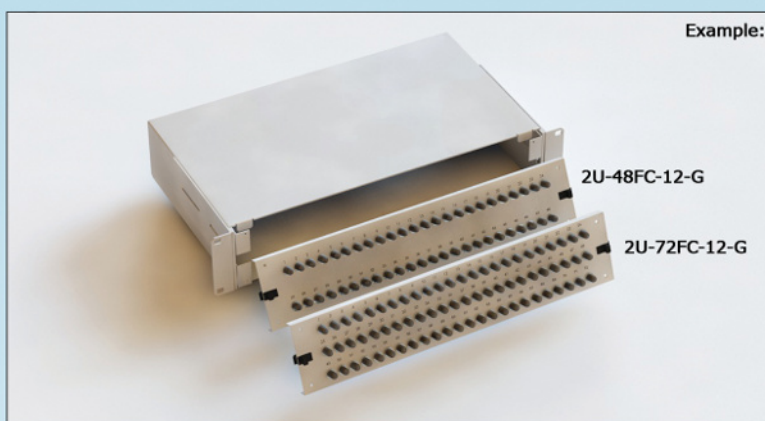
#### ST

Code	Port type	Mode	Version	Colour
2U	48ST	O = empty	1 = empty	G = light grey RAL7035
	72ST	S = OS2 (9/125)	2 = with adapters	
		1 = OM1 (62,5/125)	3 = with adapters & enclosure	
		2 = OM2 (50/125)	4 = fully loaded	
		3 = OM3 (50/125)		
		4 = OM4 (50/125)		



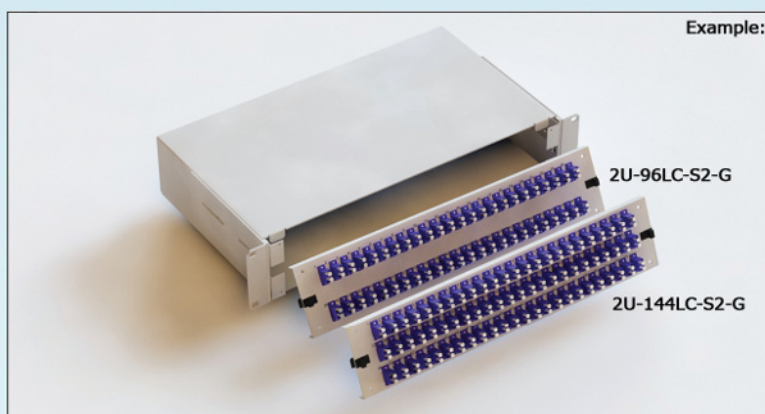
### FC

Code	Port type	Mode	Version	Colour
2U	48FC	O = empty	1 = empty	G = light grey RAL7035
	72FC	A = OS2 (APC 9/125)	2 = with adapters	
		S = OS2 (9/125)	3 = with adapters & enclosure	
		1 = OM1 (62,5/125)	4 = fully loaded	
		2 = OM2 (50/125)		
		3 = OM3 (50/125)		
		4 = OM4 (50/125)		



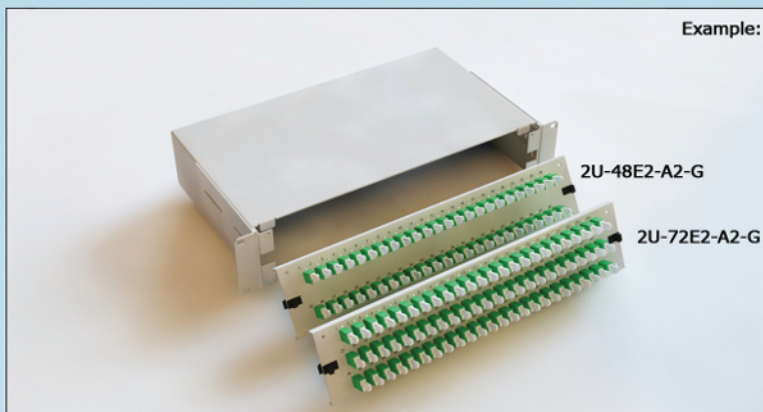
### LCD

Code	Port type	Mode	Version	Colour
2U	96LC	O = empty	1 = empty	G = light grey RAL7035
	144LC	A = OS2 (APC 9/125)	2 = with adapters	
		S = OS2 (9/125)	3 = with adapters & enclosure	
		1 = OM1 (62,5/125)	4 = fully loaded	
		2 = OM2 (50/125)		
		3 = OM3 (50/125)		
		4 = OM4 (50/125)		



### E2000

Code	Port type	Mode	Version	Colour
2U	48E2	O = empty	1 = empty	G = light grey RAL7035
	72E2	A = OS2 (APC 9/125)	2 = with adapters	
		S = OS2 (9/125)	3 = with adapters & enclosure	
		1 = OM1 (62,5/125)	4 = fully loaded	
		2 = OM2 (50/125)		
		3 = OM3 (50/125)		
		4 = OM4 (50/125)		



### Included in packaging

- Standard back entries of patchpanel: 4x angled back plate including cable glang PG13,5
- 1x M6 kit (for mounting patchpanel to rack)
- 4x twister & 4x cable tie
- Splice protections: heat shrink type L=45mm, D=2,5mm
- Each splice cassette is equiped with 2x 12-position splice holder

