

# 3M™ Quick Connect System (QCS) 2810

## Designed for your broadband network

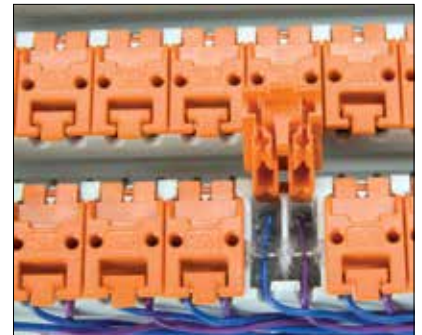
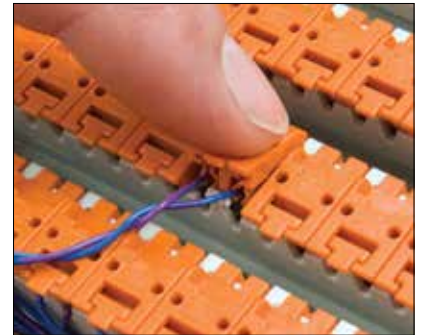
The 3M™ Quick Connect System (QCS) 2810 is an insulation displacement connector (IDC) termination system from 3M. The QCS 2810 system is a simple-to-use, tool-less copper block; an ideal solution for outside plant applications. Whether in cross-connect cabinets or at the edge of the network, the gel-filled 2810 system is the solution.

## New demands in an age of information

Every day, local loop providers work to provide enhanced customer services such as data access with faster Internet transmission, video-on-demand and video conferencing. Many providers are deploying ADSL2+ & VDSL2 over twisted pair copper cable to meet these demands. As new technologies migrate into the local loop, the importance of connections in the embedded plant increases. 3M provides connectors you can trust.

## Visual confirmation without signal loss

Contact integrity is critical, not only at the time of installation but over the life of the connector. The QCS 2810 system can be re-opened without breaking the circuit for visual validation of the IDC connection. High-integrity gel encapsulation protects against moisture and corrosion, and is designed to remain in place even after multiple wire insertions.



Features	Benefits
Tool-less jumpering	Simple termination practices help increase technician productivity
Gelled interconnect	High integrity connection for network reliability & broadband performance
Visibility to jumpers	Ability to inspect jumper termination allows validation of connection, minimizing rework
Pair-at-once termination	Increases craft productivity
Low termination force	Craft-friendly, tool-less design
Termination cap	Protection from dust and other environmental contaminants

## As you like it

The 3M™ Quick Connect System (QCS) 2810 is available in models and frames to meet your application. The QCS 2810 system is modular in design. Termination blocks are available for pre-terminated applications in a 50-pair block or field-terminated applications in a 10-pair strip. In field-terminated applications, the block fits on standard frames and is capable of terminating cable-side either with thumb actuation or with a convenient punch-down tool for increased productivity.

## Field cable termination options

The 3M™ Quick Connect System 2810A: A 10-pair strip utilizing an IDC punch down tool to insert the cable wire into the back-side IDC element and trim the wire in one motion. This tool increases craft productivity in the installation of a cabinet, allowing the technician to prepare all ten cable pair that go to a given block and then to follow along with the tool and insert each wire in short order. Once the block is cabled and placed on the frame, the jumpering is completely tool-less.

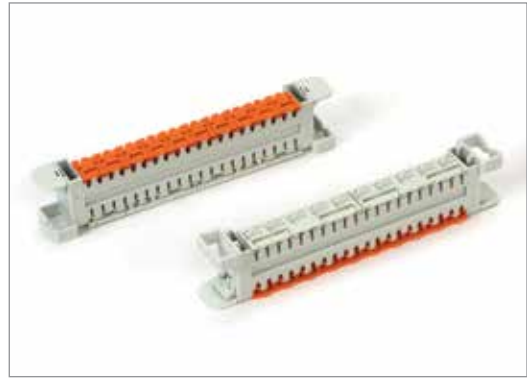
The 3M™ Quick Connect System 2810B: A 10-pair strip with completely tool-less termination. In this strip, the ergonomic jumper caps are located on the cable side as well as the jumper side allowing for tool free termination of the cables and tool-less jumpering. All terminations are pair-at-a-time.

## Pre-terminated option

The pre-terminated configuration of the QCS 2810 is available in 50-pair increments. The blocks come terminated with twisted-pair tails to 3M™ 710 or 3M™ MS2™ Splicing Modules. Different wire lengths and modules are available on request.

## Applications

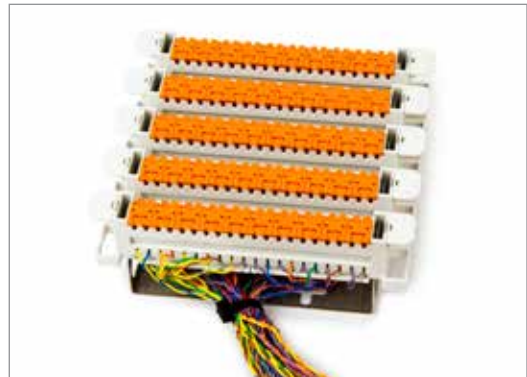
The Quick Connect System 2810 can be used throughout the network as the common interconnectivity and termination platform. Designed specifically for rugged use and robust performance in the outside plant, the QCS 2810 system is ideal for use in pole or wall mount cable terminals, distribution pedestals, strand or drop wire terminals, cross-connect cabinets and remote terminals.



3M™ Quick Connect System 2810A



3M™ Quick Connect System 2810B



3M™ Quick Connect System 2810 (pre-terminated)

## 3M™ Quick Connect System 2810

### Mechanical Specifications

Dimensions:	Height	Width	Depth*
10-pair strip (not on frame)	20 mm / 0.79 in.	135 mm / 5.31 in.	26 mm / 1.02 in.
50-pair block (on frame, 25 mm pitch)	125 mm / 4.9 in.	135 mm / 5.31 in.	47 mm / 1.85 in.
50-pair block (on frame, 22.5 mm pitch)	112.5 mm / 4.4 in.	135 mm / 5.31 in.	47 mm / 1.85 in.
* Depth-on-frame can vary depending on pair count			
Wire range IDC contacts – solid copper conductor	0.4 mm to 0.6 mm	26 AWG to 22 AWG	
Wire re-terminations:	250 re-terminations of 24 AWG per Telcordia TR-NWT-001195		

### Electrical

Insulation resistance:	>1x10 <sup>10</sup> Ω
Contact resistance:	< 10 mΩ
Dielectric strength:	3000 V rms, 60 Hz AC
High voltage surge:	3000 V DC Surge

### Environmental

Telcordia TR-NWT-001195	“Generic Requirements for Insulation Displacement Connector (IDC) Cross-Connect Terminal Blocks”
Operating temperature range	-20°C to 60°C
Storage temperature range	-40°C to 90°C
RoHS: Compliant with EU RoHS Directive (2011/65/EU)	

### Materials

Plastics:	Thermoplastic
Contacts:	Bronze, Tin (Sn) plating

## Ordering Information

Product Number	Product Description	3M ID	Min. Order
<b>BLOCKS</b>			
2810A-0	Type A cross connect terminal block, gel-filled, 10-pair block - orange	XS-0038-7338-6	200
2810B-0	Type B cross connect terminal block, gel-filled, 10-pair block - orange	XS-0038-7339-4	200
2810-50-HCO/20-T	50-pair block with a 20-inch harness with 710T connector	80-6113-3240-6	1
2810-HCO/48-GBM	50-pair block with a 48-inch harness with GBM connector	80-6113-3231-5	1
2810-HCO/48-T	50-pair block with a 48-inch harness with 710T connector	80-6113-3241-4	1
2810-HCO/48-TTC	50-pair block with a 48-inch harness with 710TTC connector	80-6113-3246-3	1
2810-HCO/62-GBM	50-pair block with a 62-inch harness with GBM connector	80-6113-3232-3	1
2810-HCO/62-T	50-pair block with a 62-inch harness with 710T connector	80-6113-3242-2	1
<b>BLOCKS AND FRAME KITS</b>			
2810A-FTK100	Field termination kit: QCS 2810A blocks with 100-pair frame	80-6113-3502-9	1
2810A-FTK50	Field termination kit: QCS 2810A blocks with 50-pair frame	80-6113-3501-1	1
2810B-FTK50	Field termination kit: QCS 2810B blocks with 50-pair frame	80-6113-3503-7	1
2810B-FTK100	Field termination kit: QCS 2810B blocks with 100-pair frame	80-6113-3504-5	1
2810F50-HCO/48-DPM	QCS 2810 pre-terminated 48-inch harness to DPM connector, 50 pair with frame	80-6113-3214-1	1
2810F50-HCO/48-GBM	QCS 2810 pre-terminated 48-inch harness to GBM connector, 50 pair with frame	80-6113-3212-5	1
2810F50-HCO/48-T	QCS 2810 pre-terminated 48-inch harness to 710T connector, 50 pair with frame	80-6113-3216-6	1
2810F100-HCO/48-DPM	QCS 2810 pre-terminated 48-inch harness to DPM connector, 100 pair with frame	80-6113-3215-8	1
2810F100-HCO/48-GBM	QCS 2810 pre-terminated 48-inch harness to GBM connector, 100 pair with frame	80-6113-3213-3	1
2810F100-HCO/48-T	QCS 2810 pre-terminated 48-inch harness to 710T connector, 100 pair with frame	80-6113-3217-4	1
2810F100-M21A	QCS 2810 pre-terminated short harness to RJ21 connector, 100 pair with frame	80-6113-3902-1	1
2810F50-M21A	QCS 2810 pre-terminated short harness to RJ21 connector, 50 pair with frame	80-6113-3900-5	1

## Ordering Information (cont'd)

Product Number	Product Description	3M ID	Min. Order
<b>2811 BLOCKS AND FRAME KITS</b>			
2811DF100-M21A	QCS 2811 pre-terminated short harness to RJ21 connector, 100 pair with frame	80-6113-3898-1	1
2811DF50-M21A	QCS 2811 pre-terminated short harness to RJ21 connector, 50 pair with frame	80-6113-3896-5	1
2811F100-100-30P	QCS 2811B, dry, 100 pair with frame, 30 mm pitch	80-6114-8015-5	1
<b>WALL MOUNT FRAMES</b>			
2810F100-25P	QCS frame only, 25 mm pitch, 100 pair	80-6113-3164-8	1
2810F100-22P	QCS frame only, 22.5 mm pitch, 100 pair	80-6113-3166-3	1
2810F30-25P	QCS frame only, 25 mm pitch, 30 pair	80-6113-8949-7	1
2810F50-22P	QCS frame only, 22.5 mm pitch, 50 pair	80-6113-3165-5	1
2810F50-25P	QCS frame only, 25 mm pitch, 50 pair	80-6113-3163-0	1
2810FT100-25P	QCS frame only (tall), 25 mm pitch, 100 pair	80-6113-8899-4	1
2810FT50-25P	QCS frame only (tall), 25 mm pitch, 50 pair	80-6113-8947-1	1
2811F100-30P	QCS frame only, 30 mm pitch, 100 pair	80-6114-8013-0	1
2811F100MB	Wall-mount mounting brackets, forward extension	80-6114-8014-8	1
<b>BLOCKS AND FRAMES — REHAB</b>			
<b>FOR 108 or 110 BLOCKS</b>			
2810F108-REHAB200-HCO/87-GBM	200-pair rehab block for 108 blocks, 87-inch harness with GBM connector	80-6113-8093-4	1
2810F108-REHAB200-HCO/87-TTC	200-pair rehab block for 108 blocks, 87-inch harness with 710TTC connector	80-6113-8094-2	1
<b>FOR BT1-25 BLOCKS</b>			
2810F-BT1-25REHAB100HCO/87GBM	100-pair rehab block for BT1-25 blocks, 87-inch harness with GBM connector	80-6114-8096-5	1
2810F-BT1-25REHAB100HCO/87TTC	100-pair rehab block for BT1-25 blocks, 87-inch harness with 710TTC connector	80-6114-8097-3	1
<b>FOR 50 PAIR RLS BLOCKS</b>			
2810FRL-REHAB50-HCO/87-GBM	50-pair rehab block for RLS-50 blocks, 87-inch harness with GBM connector	80-6113-3793-4	1
2810FRL-REHAB50-HCO/87-TTC	50-pair rehab block for RLS-50 blocks, 87-inch harness with 710TTC connector	80-6113-3794-2	1
<b>FOR 4320 SELF STRIP BLOCKS</b>			
2810FSS-REHAB50-HCO/87-GBM	50-pair rehab block for 4320SS blocks, 87-inch harness with GBM connector	80-6113-3426-1	1
2810FSS-REHAB50-HCO/87-TTC	50-pair rehab block for 4320SS blocks, 87-inch harness with 710TTC connector	80-6113-3425-3	1
<b>FOR 76 BLOCKS</b>			
2810F76-REHAB100-HCO/62-TTC	100-pair rehab block for 76 blocks, 62-inch harness with 710TTC connector	80-6113-3427-9	1
2810F76-REHAB100-HCO/87-GBM	50-pair rehab block for 76 blocks, 87-inch harness with GBM connector	80-6113-3430-3	1
2810F76-REHAB100-HCO/87-TTC	50-pair rehab block for 76 blocks, 87-inch harness with 710TTC connector	80-6113-3429-5	1

## Ordering Information (cont'd)

Product Number	Product Description	3M ID	Min. Order
<b>ACCESSORIES</b>			
2810HT	Termination hand tool IDC — small	XS-0038-3869-4	10
2810-L	Label holder	XS-0038-7405-3	100
2810L-J	Jumpering label (placed inside cabinet door)	80-6113-3514-4	10
2810L-P	Label holder — purple	XS-0038-8598-4	100
2810LT-BLGR1-1800	Tagging labels, blue/green, 1-1800	80-6113-8034-8	5
2810LT-BLGR1801-3600	Tagging labels, blue/green, 1801-3600	80-6113-8035-5	5
2810LT-BLGR3601-6000	Tagging labels, blue/green, 3601-6000	80-6113-8036-3	5
2810LT-PU1-1800	Tagging labels, purple, 1-1800	80-6114-8480-1	5
2810LT-PU1801-3600	Tagging labels, purple, 1801-3600	80-6114-8481-9	5
2810LT-PU3601-5400	Tagging labels, purple, 3601-5400	80-6114-8482-7	5
2810LT-PU5401-7200	Tagging labels, purple, 5401-7200	80-6114-8483-5	5
2810LT-YL1-1800	Tagging labels, yellow, 1-1800	80-6114-8060-1	5
2810LT-YL1-5401-7200	Tagging labels, yellow, 5401-7200	80-6114-8063-5	5
2810LT-YL1801-3600	Tagging labels, yellow, 1801-3600	80-6114-8061-9	5
2810LT-YL3601-5400	Tagging labels, yellow, 3601-5400	80-6114-8062-7	5
2810PC-P	Priority cap — purple	XS-0038-8516-6	100
2810PC-R	Priority cap — red	XS-0038-7407-9	100
2810PC-Y	Priority cap — yellow	XS-0038-0280-7	100
2810RC-0	Replacement cap — orange	XS-0038-7406-1	100
2810RC-P	Replacement cap — purple	XS-0038-8599-2	100

“RoHS 2011/65/EU” means that the product or part does not contain any of the substances in excess of the maximum concentration values (“MCVs”) in EU RoHS Directive 2011/65/EU. The MCVs are by weight in homogeneous materials. This information represents 3M’s knowledge and belief, which may be based in whole or in part on information provided by third party suppliers to 3M.

3M and MS<sup>2</sup> are trademarks of 3M Company.

### Important Notice

All statements, technical information, and recommendations related to 3M’s products are based on information believed to be reliable, but the accuracy or completeness is not guaranteed. Before using this product, you must evaluate it and determine if it is suitable for your intended application. You assume all risks and liability associated with such use. Any statements related to the product which are not contained in 3M’s current publications, or any contrary statements contained on your purchase order shall have no force or effect unless expressly agreed upon, in writing, by an authorized officer of 3M.

#### Warranty; Limited Remedy; Limited Liability.

This product will be free from defects in material and manufacture for a period of 12 months from the time of purchase. **3M MAKES NO OTHER WARRANTIES INCLUDING, BUT NOT LIMITED TO, ANY IMPLIED WARRANTY OF MERCHANTABILITY OR FITNESS FOR A PARTICULAR PURPOSE.** If this product is defective within the warranty period stated above, your exclusive remedy shall be, at 3M’s option, to replace or repair the 3M product or refund the purchase price of the 3M product. **Except where prohibited by law, 3M will not be liable for any loss or damage arising from this 3M product, whether indirect, special, incidental or consequential regardless of the legal theory asserted.**



#### Communication Markets Division

6801 River Place Blvd.  
Austin, TX 78726-9000  
800/426 8688  
Fax 800/626 0329  
www.3M.com/Telecom

Please recycle. Printed in USA.  
© 3M 2014. All rights reserved.  
80-6114-9888-4