



DATASHEET

Mounting Bracket CFD

Article number: 29027

Product description

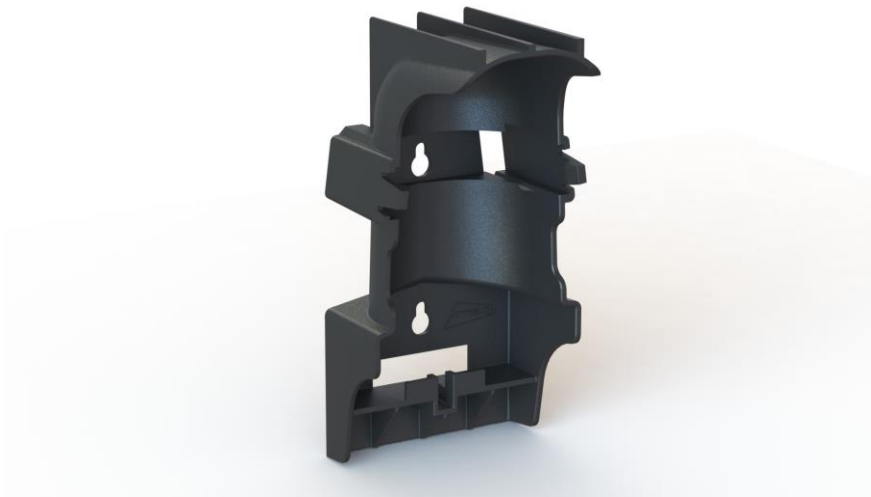
The mounting bracket CFD is specially developed for the Compact Fiber Dome, which is able to extend or repair the FttH drop cable for aerial and direct buried applications. This way, the Compact Fiber Dome can be quickly and firmly assembled against a wall or any other surface.

The mounting bracket is quickly disassembled and therefore very suitable for creating temporary connections anywhere. Both CFD and mounting bracket are universally applicable, independent of the chosen FTTH drop cable.

The mounting bracket also provides extra protection for the Compact Fiber Dome.

Features and Benefits

- Easy to install
- Universally applicable
- Impact resistant
- Extra protection CFD
- Fixed and temporary connections
- Increased UV-Resistant



Colour

Black

Article number

29027: Mounting Bracket CFD

Packaging

Packaging quantity: 5 pcs
Cardboard dimensions: 230 x 190 x 95 mm

All products suitably packed in recyclable materials and clearly labelled with Attema article number and description.

Technical characteristics

Material: Polypropylene Co-Polymer (Master Batch UV)
Dimensions: L=175 W=90mm H=85mm
Color: Black
Weight: 80 gram

END OF DATASHEET

www.attema.com