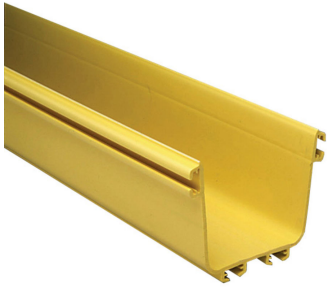


FGS-MSHS-A



FiberGuide® Horizontal Straight Section, 4x4in, Yellow

- FiberGuide products are designed and manufactured to ensure total off-frame fiber cable protection
- FiberGuide maintains a minimum bend radius throughout the entire system, regardless the system size
- FiberGuide is an optical raceway system for central office, mobile switching center and data center applications
- Engineers and installers can benefit from the large suite of available FiberGuide design tools

Product Classification

Regional Availability	Asia Australia/New Zealand EMEA Latin America North America
Portfolio	CommScope®
Product Type	Fiber raceway straight section
Product Brand	FiberGuide®
Product Series	FGS

General Specifications

Product Feature	Snap-together design
Color	Yellow
Orientation	Horizontal
Section Type	Straight Section

Dimensions

Height	101.6 mm 4 in
Width	101.6 mm 4 in
Length	1829 mm 72.008 in
System Dimensions	102 mm x 102 mm (4 in x 4 in)

Ordering Tree

FGS-MSHS-A

9	10	11
FGS	B	- MSHS -
	F	10

Section Color

9	empty	yellow
	B	black

Section Length

11	empty	6 ft
	10	10 ft
	12	12 ft

Section Size

10	A	4 x 4 in
	B	4 x 6 in
	C	2 x 2 in
	D	4 x 4 in, slotted duct, 2 in slot spacing
	F	4 x 12 in
	F-CF	4 x 12 in, with center divider
	G	2 x 6 in
	H	4 x 24 in
	K	2 x 4 in, slotted duct, 2 in slot spacing
	STOR-B	4 x 6 in, with slack storage spools
	STOR-G	2 x 6 in, with slack storage spools
	STOR-F	4 x 12 in, with slack storage spools

Material Specifications

Material Type Engineering Thermoplastic

Environmental Specifications

Flammability Rating CSA S143 | UL 2024 | UL 94 V-0

Halogen Characteristics Blue Angel | TCO '99 | WEEE

Safety Standard CSA | UL

Packaging and Weights

Weight, net 2.7 kg | 5.952 lb

Regulatory Compliance/Certifications

Agency

CHINA-ROHS

REACH-SVHC

ROHS

Classification

Below maximum concentration value

Compliant as per SVHC revision on www.commscope.com/ProductCompliance

Compliant

