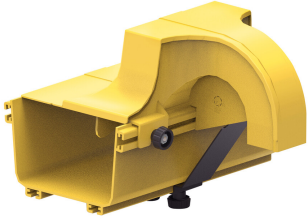


FGS-MEXP-A/B/F



FiberGuide® 2-Inch Express Exit™, 4x4, 4x6, 4x12in, Yellow

- FiberGuide products are designed and manufactured to ensure total off-frame fiber cable protection
- FiberGuide maintains a minimum bend radius throughout the entire system, regardless the system size
- FiberGuide is an optical raceway system for central office, mobile switching center and data center applications
- Engineers and installers can benefit from the large suite of available FiberGuide design tools

Product Classification

Regional Availability	Asia Australia/New Zealand EMEA Latin America North America
Portfolio	CommScope®
Product Type	Fiber raceway drop kit
Product Brand	FiberGuide®
Product Series	FGS

General Specifications

Color	Yellow
Orientation	Horizontal
Section Type	Express exit

Dimensions

Height	125 mm 4.921 in
Width	254 mm 10 in
System Dimensions	102 mm x 102 mm (4 in x 4 in) 102 mm x 152 mm (4 in x 6 in) 102 mm x 305 mm (4 in x 12 in) 102 mm x 610 mm (4 in x 24 in)

Ordering Tree

FGS-MEXP-A/B/F



Section Color

9	empty	yellow
	B	black

Section Size

10	A/B/F	4 x 4/6/12 in, with 2 x 2 in exit
	E-A/B/F	4 x 4/6/12 in, with 4 x 4 in exit
	F-F/H-NC	4 x 12/18/24 in, with 4 x 12 in exit, no cover
	G-A/B/F	4 x 4/6/12 in, with 4 x 6 in exit
	LP-A/B/F	4 x 4/6/12 in, with 2 x 2 in exit, low profile
	LP-CA	4 x 4/6/12 in, with 2 x 4 in exit, low profile
	LP-G	2 x 6 in, with 2 x 2 in exit, low profile
	GS-ABF-NC	4 x 4/6/12 in, with 4 x 6 in exit, no cover
	CV	cover
	NC	no cover

Material Specifications

Material Type Engineering Thermoplastic

Environmental Specifications

Flammability Rating CSA S143 | UL 2024 | UL 94 V-0

Halogen Characteristics Blue Angel | TCO '99 | WEEE

Safety Standard CSA | UL

Packaging and Weights

Weight, net 0.98 kg | 2.161 lb

Regulatory Compliance/Certifications

Agency

CHINA-ROHS

REACH-SVHC

ROHS

UK-ROHS

Classification

Below maximum concentration value

Compliant as per SVHC revision on www.commscope.com/ProductCompliance

Compliant

Compliant

