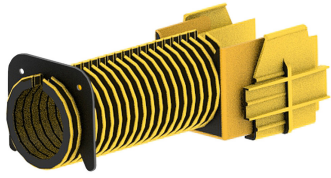


# FGS-MEX1-C-10F

---



## FiberGuide® Single 2in Flex Tube Attachment, 2x2in, 10ft Length, Yellow

- FiberGuide products are designed and manufactured to ensure total off-frame fiber cable protection
- FiberGuide maintains a minimum bend radius throughout the entire system, regardless of the system size
- FiberGuide is an optical raceway system for central office, mobile switching center and data center applications
- Engineers and installers can benefit from the large suite of available FiberGuide design tools

## Product Classification

<b>Regional Availability</b>	Asia   Australia/New Zealand   EMEA   Latin America   North America
<b>Portfolio</b>	CommScope®
<b>Product Type</b>	Fiber raceway convoluted tube
<b>Product Brand</b>	FiberGuide®
<b>Product Series</b>	FGS

## General Specifications

<b>Color</b>	Yellow
<b>Orientation</b>	Vertical
<b>Section Type</b>	Adapter

## Dimensions

<b>Length</b>	3048 mm   120 in
<b>Tube Outer Diameter</b>	50.8 mm   2 in
<b>System Dimensions</b>	51 mm x 51 mm (2 in x 2 in)

## Material Specifications

<b>Material Type</b>	Engineering Thermoplastic
----------------------	---------------------------

## Environmental Specifications

<b>Flammability Rating</b>	CSA S143   UL 2024   UL 94 V-0
<b>Halogen Characteristics</b>	Blue Angel   TCO '99   WEEE
<b>Safety Standard</b>	CSA   UL

# FGS-MEX1-C-10F

---

## Packaging and Weights

**Weight, net** 1.3 kg | 2.866 lb

## Regulatory Compliance/Certifications

<b>Agency</b>	<b>Classification</b>
CHINA-ROHS	Below maximum concentration value
REACH-SVHC	Compliant as per SVHC revision on <a href="http://www.commscope.com/ProductCompliance">www.commscope.com/ProductCompliance</a>
ROHS	Compliant
UK-ROHS	Compliant

