

# **DATASHEET**

## Intelligent & Basic Power Distribution Units

**CONTEG**

## COMPLEMENTARY SYSTEMS

# INTELLIGENT & BASIC POWER DISTRIBUTION UNITS



➤ The CONTEG Intelligent & Basic Power product range comprises three different types of PDUs.

### MAIN ADVANTAGES

- PDUs offer a combination of outlets, including national outlet styles combined with industrial outlets and 1- or 3-phase power input
- Hybrid technology of access—Ethernet and data bus connections
- High accuracy of metered values

Comparison	BASIC		MONITORED <sup>1</sup>		MANAGED <sup>2</sup>	
	DP-RP	IP-BA	IP-SEI	IP-SEI-POM <sup>3</sup>	IP-SEA	IP-SEA-POM <sup>3</sup>
Basic	yes	yes	–	–	–	–
Metered (V, A, f, PF, kVA, kW, kWh)	–	–	yes	yes	yes	yes
Input metering	–	–	yes	yes	yes	yes
Metering of individual outlets	–	–	–	yes	–	yes
Switching of individual outlets	–	–	–	–	yes	yes
Master-Slave connection	–	–	yes	yes	yes	yes
SNMP	–	–	yes	yes	yes	yes
Modbus TCP	–	–	yes	yes	yes	yes

<sup>1</sup> MONITORED PDUs: Remote monitoring of power consumption (input metering).

<sup>2</sup> MANAGED PDUs: Remote monitoring of power consumption (input metering) and switching of individual outlets.

<sup>3</sup> MONITORED PDUs with the POM marking: Remote monitoring of power consumption (input metering) and also per outlet (output metering).

<sup>4</sup> MANAGED PDUs with the POM marking: Remote monitoring of power consumption (input metering) and also per outlet (output metering), switching of individual outlets.

## BASIC POWER



Basic PDU

The Basic power distribution units (PDUs) are used for power supply and its distribution to individual IT equipment in the racks.

#### Types

- a) 19" mounting
- b) 10" mounting
- c) Free-standing
- d) Vertical mounting (OU)

#### Outlet types

- UTE, SCHUKO, UK, IEC320 C13, IEC320 C19
- Other outlet types (in combination with surge protection and ammeter) also available

#### Power output

- SCHUKO, UTE, IEC320 C19: 16 A, 250 V
- UK: 13 A, 250 V
- IEC320 C13: 10 A, 250 V

#### Power input

- All types with 3 m power cord

### BASIC POWER DISTRIBUTION UNITS (contain the same type of outlets per panel)

Code	Mounting	H (in U)	Input plug	Outlet type	Qty	Over voltage protection	Switch
DP-RP-02-UK	10"	1	UK	UK	2	–	–
DP-RP-03-UTE	10"	1	SCHUKO/UTE	UTE	3	–	–
DP-RP-03-SCHU	10"	1	SCHUKO/UTE	SCHUKO	3	–	–
DP-RP-06-UTESP*	19"	2	SCHUKO/UTE	UTE	6	yes	yes
DP-RP-06-SCHUSP*	19"	2	SCHUKO/UTE	SCHUKO	6	yes	yes
DP-RP-06-UTESP-F	Free	–	SCHUKO/UTE	UTE	6	yes	yes
DP-RP-06-SCHUSP-F	Free	–	SCHUKO/UTE	SCHUKO	6	yes	yes
DP-RP-06-UKS	19"	1	UK	UK	6	–	yes

\* Panels may contain HF filter (models DP-RP-06-UTEFH, DP-RP-06-SCHUPH). Basic PDUs of the product marking DP-RP contain the same type of outlets.

**BASIC POWER DISTRIBUTION UNITS (contain the same type of outlets per panel)**

Code	Mounting	H (in U)	Input plug	Outlet type	Qty	Over voltage protection	Switch
DP-RP-07-UK	19"	1	UK	UK	7	-	-
DP-RP-08-UTES	19"	1	SCHUKO/UTE	UTE	8	-	yes
DP-RP-08-SCHUS	19"	1	SCHUKO/UTE	SCHUKO	8	-	yes
DP-RP-09-UTE	19"	1	SCHUKO/UTE	UTE	9	-	-
DP-RP-09-SCHU	19"	1	SCHUKO/UTE	SCHUKO	9	-	-
DP-RP-09-IECC19	19"	1	SCHUKO/UTE	IEC320 C19	9	-	-
DP-RP-12-IECC13	19"	1	SCHUKO/UTE	IEC320 C13	12	-	-
DP-RP-20-IECC19	Vertical	-	SCHUKO/UTE	IEC320 C19	20	-	-
DP-RP-20-IECC13	Vertical	-	SCHUKO/UTE	IEC320 C13	20	-	-
DP-RP-20-SCHUV	Vertical	-	SCHUKO/UTE	SCHUKO	20	-	-
DP-RP-20-UTEV	Vertical	-	UK	UTE	20	-	-

Basic PDUs of the product marking DP-RP contain the same type of outlets per panel.



DP-RP-09-UTE



DP-RP-09-SCHU



DP-RP-12-IECC13

**BASIC POWER DISTRIBUTION UNITS (contain several types of outlets per panel)**

Code	Input plug	Length (m)	Type 1 outlet	Qty type 1 outlet	Type 2 outlet	Qty type 2 outlet	Rating (A)	Mounting	Dimensions (mm)		
									H	W	D
IP-BA-308UK8C916	EN 60309	3	UK	8	C19	8	16	OU	860	44	44
IP-BA-312UK8C316	EN 60309	3	UK	12	C13	8	16	OU	985	44	44
IP-BA-308SH8C916	EN 60309	3	SCHUKO	8	C19	8	16	OU	722	44	44
IP-BA-312SH8C316	EN 60309	3	SCHUKO	12	C13	8	16	OU	777	44	44
IP-BA-308UT8C916	EN 60309	3	UTE	8	C19	8	16	OU	780	44	44
IP-BA-312UT8C316	EN 60309	3	UTE	12	C13	8	16	OU	865	44	44
IP-BA-320C34C916	EN 60309	3	C13	20	C19	4	16	OU	908	44	44
IP-BA-C20C34C916	C20	3	C13	20	C19	4	16	OU	908	44	44
IP-BA-C12C300010	C14	3	C13	12	None	0	10	1U	44	439	44
IP-BA-C08C300016	C20	3	C13	12	None	0	16	1U	44	439	44
IP-BA-320C34C932	EN 60309	3	C13	20	C19	4	32	OU	1038	44	44
IP-BA-306C900011	EN 60309	3	C19*	6	None	0	3×16	1U	44	439	44
IP-BA-306SH00011	EN 60309	3	SCHUKO	6	None	0	3×16	1U	44	439	44
IP-BA-306UT00011	EN 60309	3	UTE	6	None	0	3×16	1U	44	439	44
IP-BA-306C900022	EN 60309	3	C19*	6	None	0	3×32	1U	44	439	145
IP-BA-318C36C911	EN 60309	3	C13	18	C19	6	3×16	OU	996	44	44
IP-BA-324C36C922	EN 60309	3	C13	24	C19	6	3×32	OU	1673	44	44

Basic PDUs of the product marking IP-BA contain several types of outlets per panel.

\* C19 sockets with lock mechanism (IEC lock).



To find our latest list of products including your ideal intelligent PDU model please visit [www.conteg.com](http://www.conteg.com) or consult with your Conteg Area Sales Manager. Additional supporting material for IP-S range is also available at <http://download.conteg.com/PDU/IP-S/>

## INTELLIGENT POWER—MONITORED

- The monitored power distribution units (PDUs) include an easy-to read display, communication interface for remote monitoring (over an Ethernet) of the current and also MIB file for the integration of the power supply panel of the third party control system or in the CPS (CONTEG ProServer).
- PDU features voltage and frequency metering, power factor, active and apparent power and main energy consumed (in kWh).



Monitored PDU, illustrative photo.

### INTELLIGENT POWER DISTRIBUTION UNITS—MONITORED

Code	Input plug	Length (m)	Type 1 outlet	Qty type 1 outlet	Type 2 outlet	Qty type 2 outlet	Rating (A)	Mounting	Dimensions (mm)		
									H	W	D
IP-SEI-008C300016	C20	x <sup>1</sup>	C13	8	x	x	1×16A	1.5U	65	440	112
IP-SEI-018C36C916	C20	x <sup>1</sup>	C13	18	C19	6	1×16A	0U	900	65	56
IP-SEI-318C36C932	EN 60309	3	C13	18	C19	6	1×32A	0U	980	65	56
IP-SEI-336C36C932	EN 60309	3	C13	36	C19	6	1×32A	0U	1410	65	56
IP-SEI-336C36C911	EN 60309	3	C13	36	C19	6	3×16A	0U	1385	65	56
IP-SEI-336C36C922	EN 60309	3	C13	36	C19	6	3×32A	0U	1560	65	56

<sup>1</sup>INPUT power cords must be ordered separately.

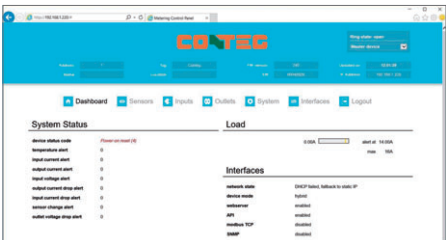
Vertical (0U) PDUs of the IP-SEI series are not equipped with brackets which need to be ordered separately (order code DP-RP-VM-12).

Monitored PDUs of the IP-SEI series are also available with per-outlet-metering functionality (on request).

## INTELLIGENT POWER—MANAGED



IP-SEA Managed PDU



Built-in web-server

- Individual on/off outlets enable remote reboot of servers.
- Current monitoring per outlet (POM).
- Features voltage and frequency metering, power factor, active and apparent power and main energy consumed (in kWh).
- MIB file for the integration of the power supply panel of the third party control system or in the CPS (CONTEG ProServer) is included.
- Thanks to the built-in web-server it is possible to set up and read information about the PDU from a common Internet browser.
- The managed PDUs offer the possibility to save the number of IP addresses needed thanks to the hybrid connection.

### INTELLIGENT POWER DISTRIBUTION UNITS—MANAGED

Code	Input plug	Length (m)	Type 1 outlet	Qty type 1 outlet	Type 2 outlet	Qty type 2 outlet	Rating (A)	Mounting	Dimensions (mm)		
									H	W	D
IP-SEA-008C300016	C20	x <sup>1</sup>	C13	8	x	x	1×16A	1.5U	65	440	112
IP-SEA-018C36C916	C20	x <sup>1</sup>	C13	18	C19	6	1×16A	0U	1570	65	56
IP-SEA-318C36C932	EN 60309	3	C13	18	C19	6	1×32A	0U	1680	65	56
IP-SEA-318C36C911	EN 60309	3	C13	18	C19	6	3×16A	0U	1610	65	56
IP-SEA-318C36C922	EN 60309	3	C13	18	C19	6	3×32A	0U	1700	65	56

<sup>1</sup>INPUT power cords must be ordered separately.

Vertical (0U) PDUs of the IP-SEA series are not equipped with brackets which need to be ordered separately (order code DP-RP-VM-12).

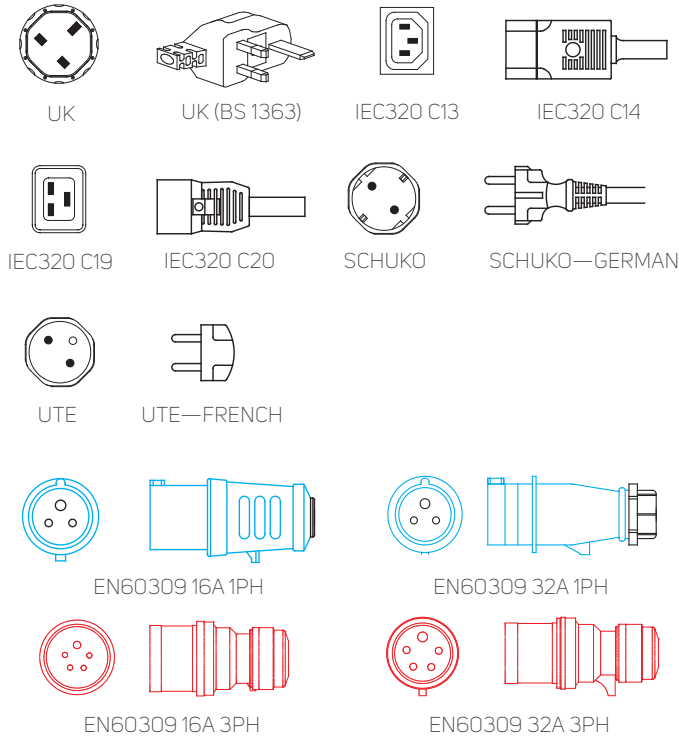
Managed PDUs of the IP-SEI series are also available with per-outlet-metering functionality (on request).

### Brackets for vertical installation of PDU

Code	Description
DP-RP-VM-01	Brackets for vertical mounting of 19"/1U Basic PDU into Ri7 or RDF frame
DP-RP-VM-02	Brackets for vertical mounting of 0U Basic PDU (e.g. DP-RP-20-xx) into Ri7 or RDF frame
DP-RP-VM-12	Universal brackets for mounting vertical PDU IP-BA, IP-D or IP-S to rack with L, P and A-type of extrusions, set for 1 PDU

Note: The PDUs of the product marking DP-RP, IP-BA and 19" IP-SEI/SEA are delivered with standard installation brackets which are designed as for 19" installation. For all vertical PDUs (0U) please add DP-RP-VM-12.

# OUTLET AND PLUG TYPES



INPUT POWER CORDS FOR INTELLIGENT PDUs		
Code	In-out type	Length
IP-C-C9SH25	IEC 320 C19 to Schuko (plug)	2.5 m
IP-C-C93025	IEC 320 C19 to EN 60309 (1x16 A)	2.5 m
IP-C-C9C225	IEC 320 C19 to IEC 320 C20	2.5 m

Necessary for 16A single phase PDUs IP-SEI/SEA.

OUTPUT POWER CORDS FOR INTELLIGENT PDUs		
Code	In-out type	Length
IP-C-C9C218	IEC 320 C19 to IEC 320 C20	1.8 m
IP-C-C3C405	IEC 320 C13 to IEC 320 C14	0.5 m
IP-C-C3C410	IEC 320 C13 to IEC 320 C14	1.0 m
IP-C-C3C418	IEC 320 C13 to IEC 320 C14	1.8 m

LOCKING INSERTS		
Code	Description	Package
IP-C-FC13	Plug Lock sleeve insert for outlet C13	50 pcs
IP-C-FC19	Plug Lock sleeve insert for outlet C19	50 pcs
IP-C-PL20	Plug Lock sleeve insert for C20 input	50 pcs
DP-RP-LC-C3	Locking clips for DP-RP-12-IECC13	12 pcs

## HOW TO READ THE ORDERING CODE OF A PDU



An example of a correct Code:

IP - SEI - 3 36 C3 6 C9 11

1. PDU TECHNOLOGY	
Code	Options
BA	Basic
SEI	Monitored
SEA	Managed

2. INPUT PLUG TYPE (on the input power cord)	
Code	Options
0	No cable, Inlet C20 only
C	IEC C20
3	EN 60309

### 3. NUMBER OF OUTLET TYPE 1

4. TYPE OF OUTLET TYPE 1	
Code	Options
UK	UK
SH	Schuko
UT	UTE (French)
C3	C13
C9	C19

### 5. NUMBER OF OUTLET TYPE 2

6. TYPE OF OUTLET TYPE 2	
Code	Options
C3	C13
C9	C19

### 7. PDU RATING

Code	Options
16	16 Amps
32	32 Amps
11	11 kW (3x16 A)
22	22 kW (3x32 A)

To find our latest list of products including your ideal intelligent PDU model please visit [www.conteg.com](http://www.conteg.com) or consult with your Conteg Area Sales Manager. Additional supporting material for IP-S range is also available at <http://download.conteg.com/PDU/IP-S/>



**CONTEG, spol. s r.o.**

**Headquarters:**

Na Vitezne plani 1719/4  
140 00 Prague 4  
Czech Republic

**Production plant:**

K Silu 2179  
393 01 Pelhrimov  
Czech Republic

Tel.: +420 565 300 362

[conteg@conteg.com](mailto:conteg@conteg.com)

[www.conteg.com](http://www.conteg.com)

**CONTEG**