


NOTES: 

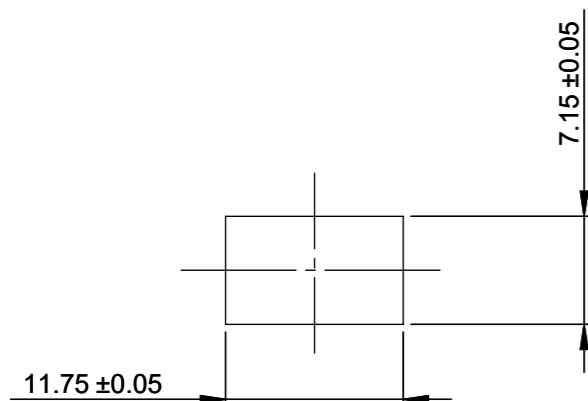
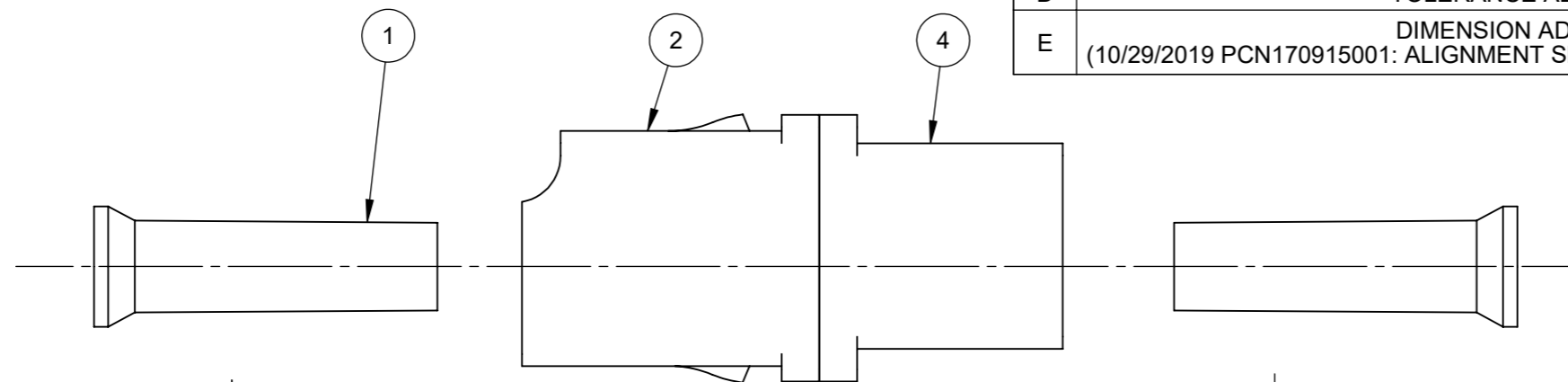
1. MATERIALS COMPLIANT TO RoHS, REACH SVHC AND UL 94 V-0

2. PANEL THICKNESS IS 1.2mm TO 1.7mm PER TIA/EIA SPECIFICATION

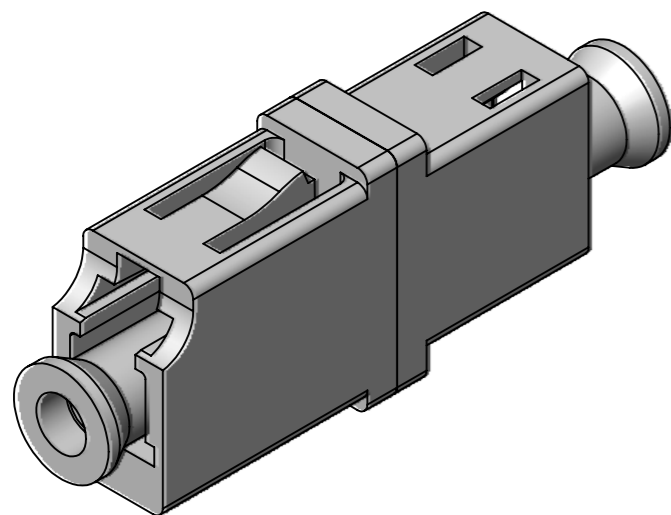
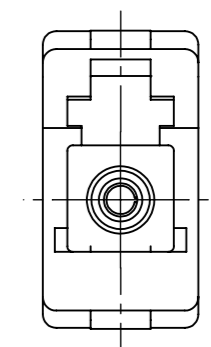
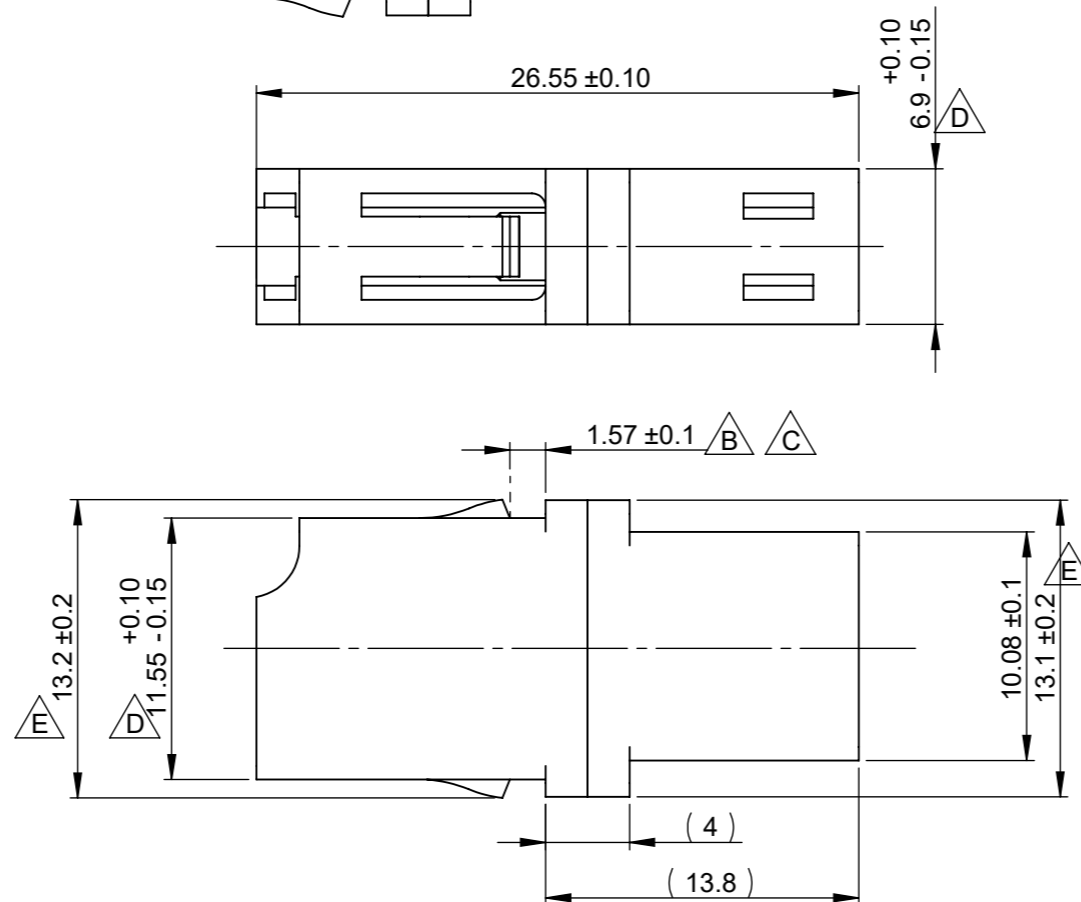
SLEEVE TYPE TABLE	
SENKO P/N	SLEEVE TYPE
999-1X1	ZIRCONIA STRAIGHT SPLIT

COLOR TABLE	
SENKO P/N	COLOR
999-11X	BLUE
999-12X	BLACK
999-13X	GREEN
999-18X	BEIGE
999-19X	AQUA

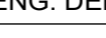
REVISIONS			
REV.	DESCRIPTION	DATE	APPROVED
A	SGER-0081, INITIAL RELEASE (7/18/2013 RE-ISSUE DUE TO TYPO CORRECTION TO BOM)	9/13/2010	GNIADEK
B	HKDCN-0086-13: DIMENSION UPDATED (7/25/2016 REISSEUD DUE TO NOTES UPDATED)	12/4/2013	KIMMAN WONG
C	DIMENSION UPDATED	7/29/2016	STEPH LEUNG
D	TOLERANCE ADJUSTED	2/7/2018	N. HO
E	DIMENSION ADJUSTED (10/29/2019 PCN170915001: ALIGNMENT SLEEVE TABLE AND BOM UPDATED)	12/11/2018	N. HO KEITH CHUNG



MOUNTING HOLE DIMENSIONS  
PANEL THICKNESS 1.7mm MAX.  
(REFERENCE ONLY)



**CONFIDENTIAL**

<div>Category</div> <div>C</div> <div>Information on this document is proprietary and may not be used, copied, reproduced, or disclosed without the written consent of SENKO Advanced Components, Inc.</div> <div>UNLESS OTHERWISE SPECIFIED: DEBURRS ALL SHARP EDGES. DIMENSIONS ARE AFTER FINISH</div> <div>TOLERANCES: .X =± .XX =± .XXX =± ∠ =±</div>	2	N/A	LC SIMPLEX ADAPTER HOUSING, SR., (SEE DWG# EN10-258)				1		
	3	ZRS-12-680	ALIGNMENT SLEEVE, (SEE TABLE FOR ID)					1	
	4	EN10-259	LC SIMPLEX ADAPTER HOUSING, JR., (SEE DWG# EN10-259)					1	
	Drawn By ENG. DEPT.		Checked By GNIADK		Approved by		All Dimensions in mm Material: SEE ABOVE	Date 09/13/2010	Scale Free
	<div> <b>SENKO</b> Advanced Components</div>				Name: 999-1XX LC STANDARD SIMPLEX ADAPTER				
Dwg.No: C-EN10-261							Rev. E	Sheet 1	