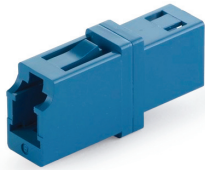
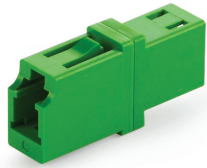


999 Series

LC ADAPTER STANDARD



LC Adapter Simplex



LC Adapter Simplex



LC Adapter Duplex

| CODE | TYPE | COLOR | SLEEVE TYPE |
|------|-----------|-------------|---------------------------|
| 999 | 1 Simplex | 1 Blue | 1 Zirconia Straight Split |
| | 2 Duplex | 2 Black | 2 Metal Straight Split |
| | | 3 APC Green | |
| | | 8 Beige | |
| | | 9 Aqua | |

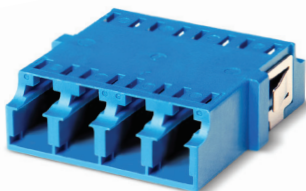
999 - 191 ORDER CODE example

Features:

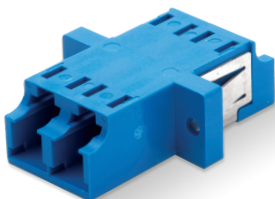
- Compact design
- RJ-45 Style Interface
- Simplex and duplex type available
- Telcordia, ANSI, TIA/EIA, and IEC compliance*
- Color coding
- High precision alignment with zirconia sleeve or metal sleeve

988 Series (SC Footprint SNR-SNR)

LC ADAPTER (SC FOOTPRINT STYLE) SYMMETRICAL DESIGN



LC Quad Adapter, with SC Footprint, without Flange, Senior-Senior



LC Duplex Adapter, with SC Footprint, with Flange, Senior-Senior

| CODE | TYPE | COLOR | SLEEVE TYPE | SHUTTER |
|------|--------------------------|-------------|---------------------------|--------------|
| 988 | 3S Duplex with Flange | 1 Blue | 1 Zirconia Straight Split | N No Shutter |
| | 4S Duplex with No Flange | 2 Black | 2 Metal Straight Split | |
| | 5S Quad with Flange | 3 APC Green | | |
| | 6S Quad with No Flange | 8 Beige | | |
| | | 9 Aqua | | |

988 - 3S11 - N ORDER CODE example

Features:

- SC Foot print design allows to use the LC Adapter in a SC panel and double the density
- Premium One piece housing design / no welding point
- Telcordia, ANSI, TIA/EIA and IEC Compliance
- Internal shutter available
- SC Foot print type, Senior - Junior type also available
- High precision alignment with zirconia sleeve or metal sleeve



LC One Piece Adapter, No Weld Type



LC Two Piece Adapter, Welded Type

The new one piece housing design prevents breaking of the adapter due to the absence of ultrasonic weld type construction.

LC ADAPTER WITH SHUTTER

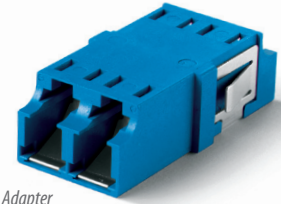
SENKO offers internal shutters for adapters to shield potentially harmful light. SENKO's patented internal shutter is a retractable shutter inside the adapter body and is only actuated by inserting the connector in to the

body, designed specifically to prevent end face damage of the ferrule. The internal shutter is fully automatic and provides an alternative to external shutter solutions.

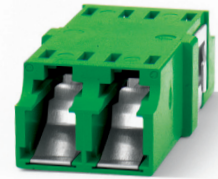
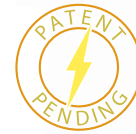
| CODE | TYPE | COLOR | SLEEVE TYPE | SHUTTER |
|------|--------------------------|-------------|---------------------------|-------------------------------|
| 988 | 3S Duplex with Flange | 1 Blue | 1 Zirconia Straight Split | A Internal Shutter (w/o mark) |
| | 4S Duplex with No Flange | 2 Black | 2 Metal Straight Split | |
| | | 3 APC Green | | |
| | | 8 Beige | | |
| | | 9 Aqua | | |

988 - 3S11 - A ORDER CODE example

988 Series



LC One Piece Adapter with SC Foot Print



LC One Piece Adapter with SC Foot Print (SNR/SNR)

LC-MU & LC-SC HYBRID ADAPTER

| PART NUMBER | DESCRIPTION |
|-------------|---|
| M90-101 | LC-MU Simplex Hybrid adapter with Zirconia Sleeve |
| 990-113 | LC-SC Simplex Hybrid adapter with Zirconia Sleeve |



LC-MU Hybrid Adapter



LC-SC Hybrid Adapter

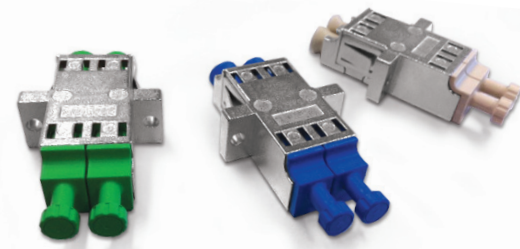
LC METAL ADAPTER

LC one piece duplex metal adapters are available in symmetrical SC foot print design with or without flanges. They can be ordered with internal shutters to provide much needed eye safety by shielding the potentially harmful laser light. These adapters have color coded

dust cap and sleeve holder to ensure right adapter is used for the correct application (PC SM: Blue, PC MM: Beige, APC: Green). Both zirconia and phosphor bronze alignment sleeves are available on this product.

| CODE | TYPE | DUST CAP/INTERNAL COLOR | SLEEVE TYPE | SHUTTER |
|------|--------------------------|-------------------------|-------------|--------------------|
| 988M | 3S Duplex with Flange | 1 Blue | 1 Zirconia | N No Sutter |
| | 4S Duplex without Flange | 2 Green | 2 Metal | A Internal Shutter |
| | | 3 Beige | | |

988M - 3S1 - 1N ORDER CODE example



LC One Piece Duplex Adapters